

CULTURAL HERITAGE SITES PRESERVATION IN FIJI



ELIA NAKORO

CULTURE: CONSERVING IT TOGETHER

1-5 OCTOBER 2018



THE FIJI MUSEUM

- ESTABLISHED IN 1904
- CURRENT BUILDING IN 1952
- CAP 263: FIJI MUSEUM ACT
- **CAP 264: PRESERVATION OF OBJECTS OF ARCHAEOLOGICAL AND PALAEOANTHROPOLOGICAL INTEREST (POAPI)**



CAP 264: POAPI

"object of archaeological or palaeontological interest" means any **structure, erection, memorial, tumulus, cairn, place of interment, pit-dwelling, trench, fortification, irrigation work, mound, excavation, cave, rock, rockdrawing, painting, sculpture, inscription, monolith, or any remains thereof, fossil remains of man or animals or plants or any bed or beds containing, such fossil remains thereof, or any object (or any remains thereof) which is or are of archaeological, anthropological, ethnological, prehistoric, or historic interest, and includes-**

- (a) the site on which such object of archaeological or palaeontological interest was discovered or exists;
- (b) such portion of land adjoining the said site as may be required for fencing or covering in or otherwise preserving such object of archaeological or palaeontological interest; and
- (c) the means of access to and convenient inspection of such object of archaeological or palaeontological interest;



THE ARCHAEOLOGY AND GAZETTING SECTION



ROLES

- ARCHAEOLOGICAL EXCAVATIONS



- COMMUNITY REQUESTS





ARCHAEOLOGICAL IMPACT ASSESSMENT REPORT

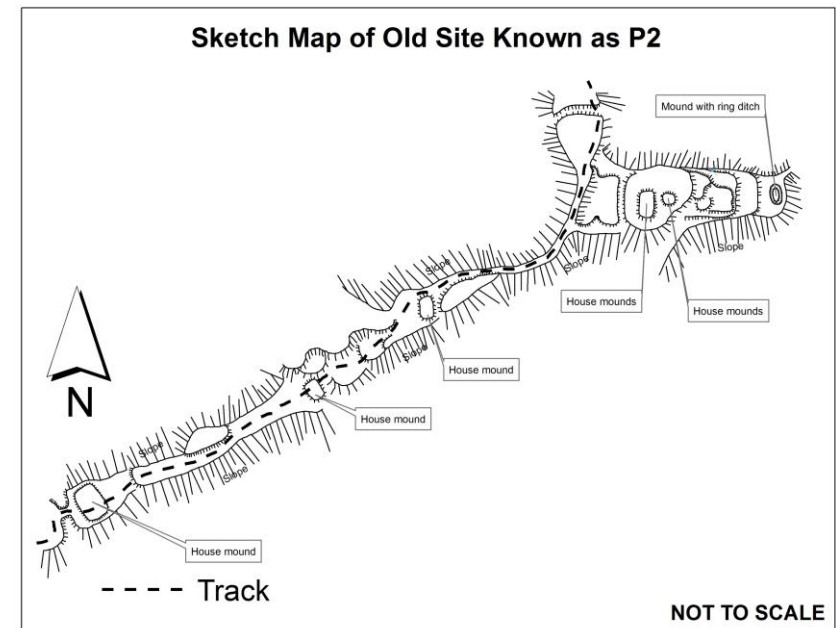


Report prepared for SCOPE Pacific Ltd.

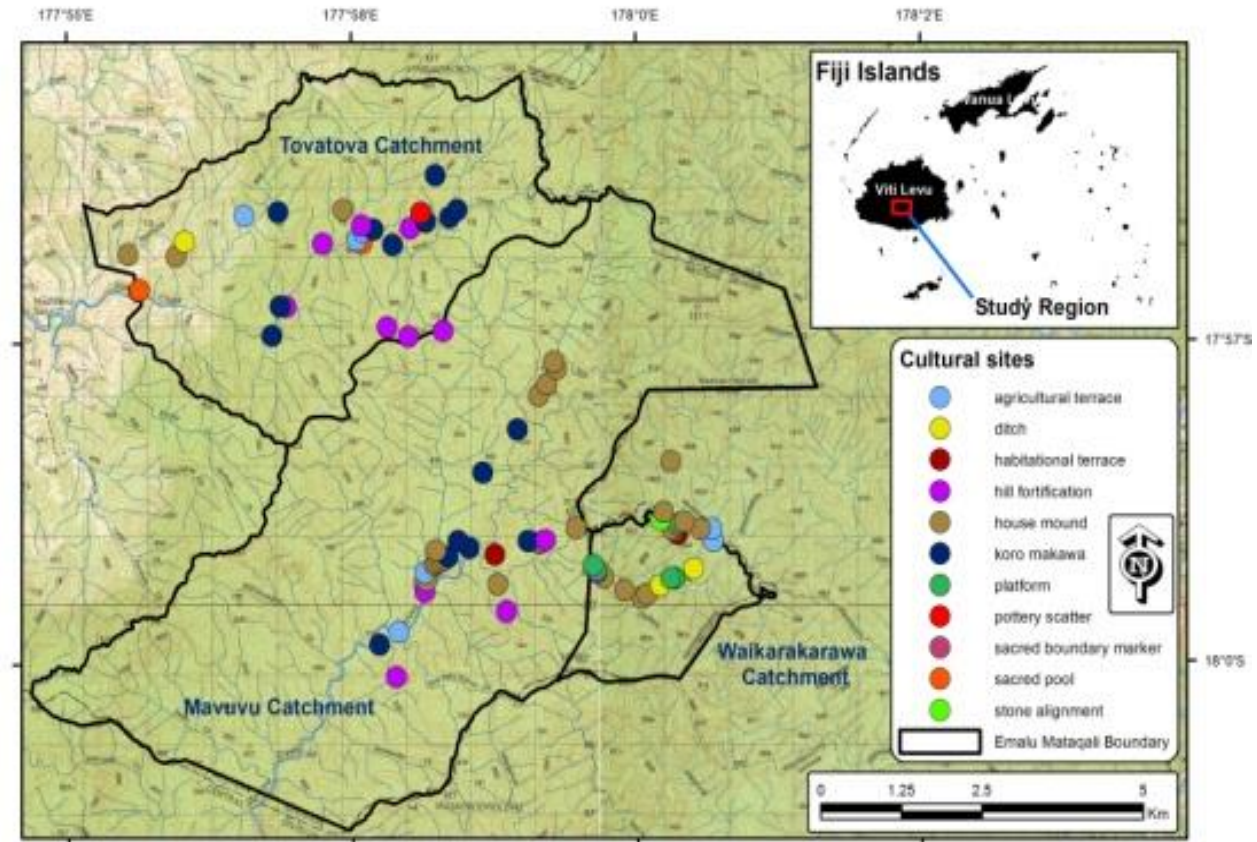
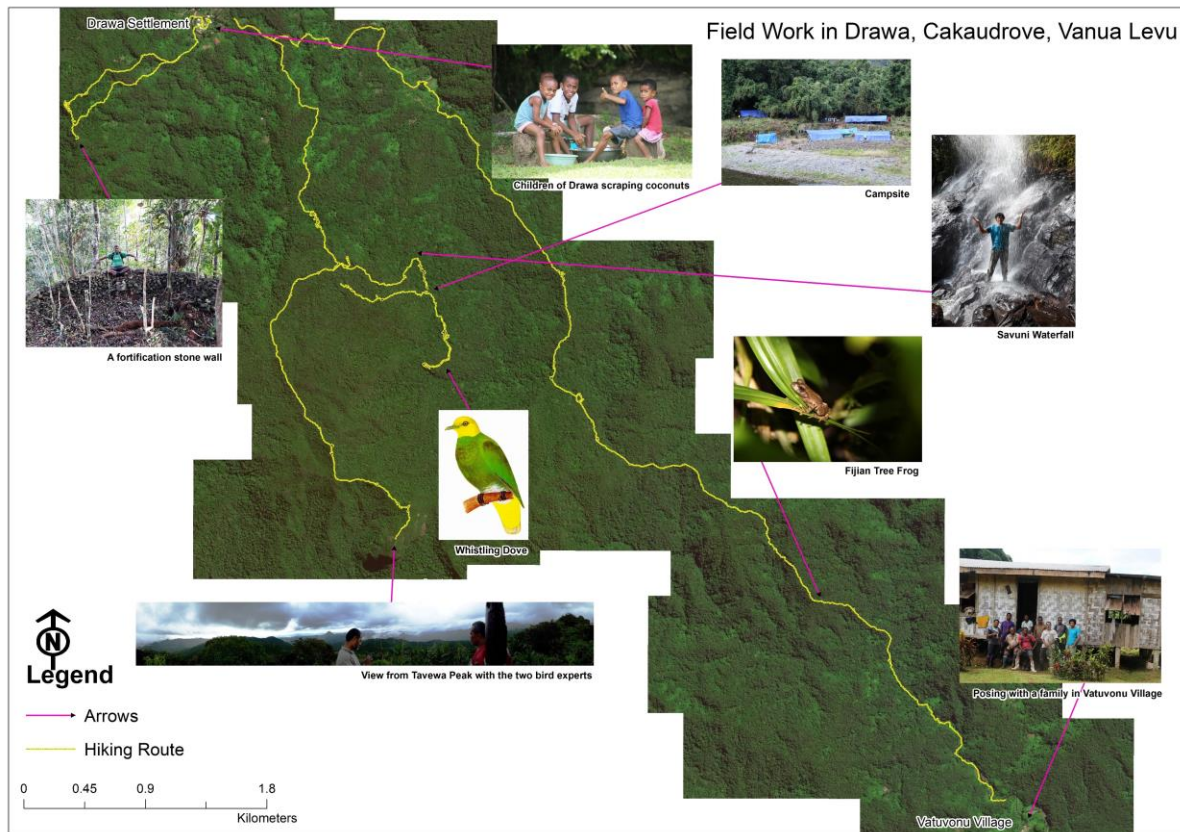
Usala Gaunavou & Ella Nakoro
The History Archaeology Department,
Fiji Museum
Suva, Fiji

9-11 May 2012

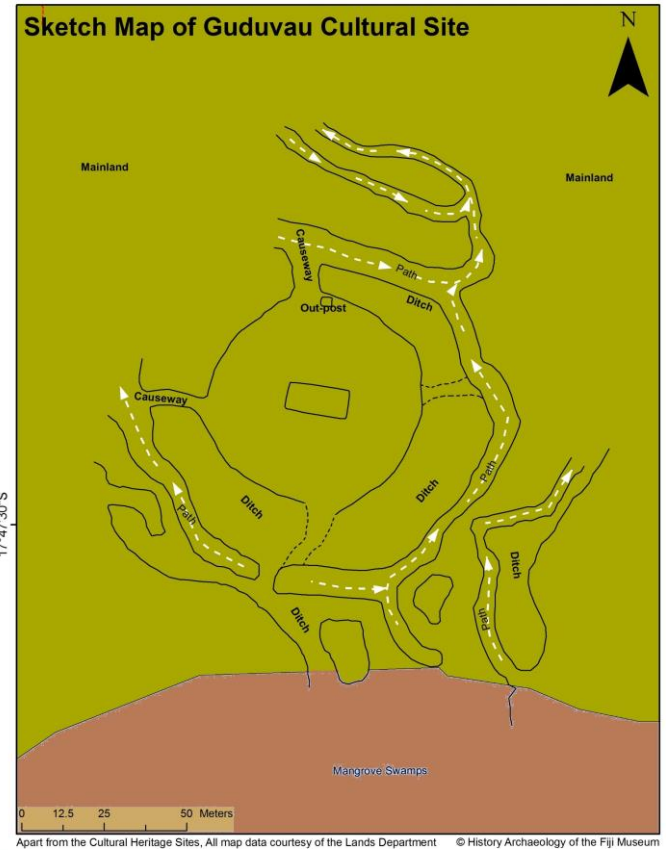
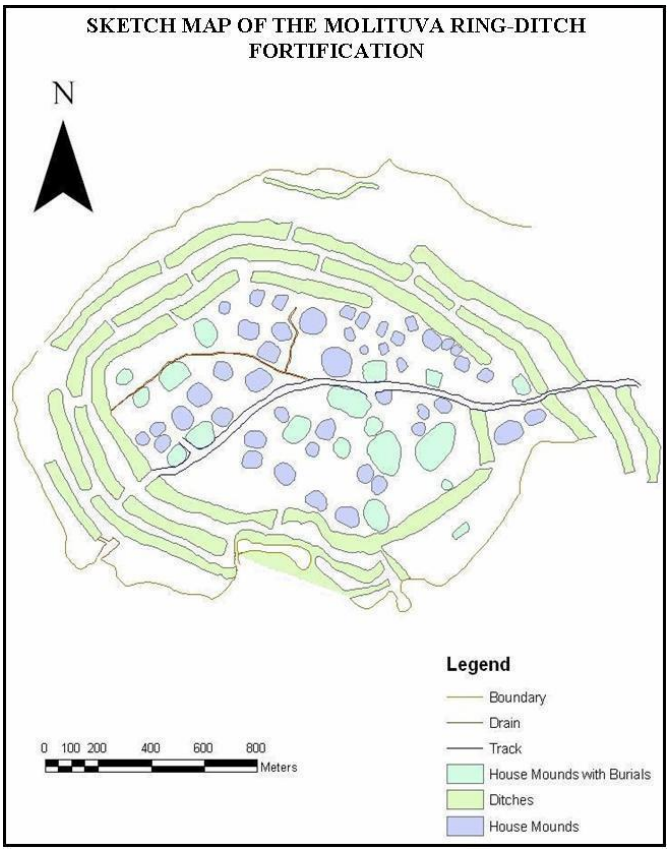
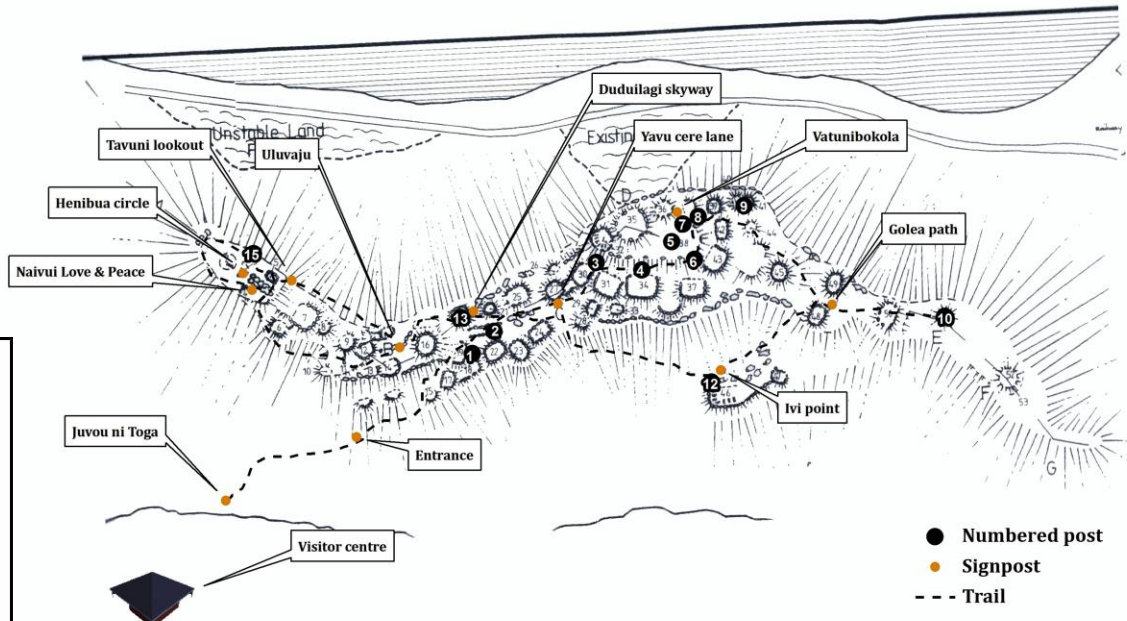
- ARCHAEOLOGICAL IMPACT ASSESSMENTS (EIA)



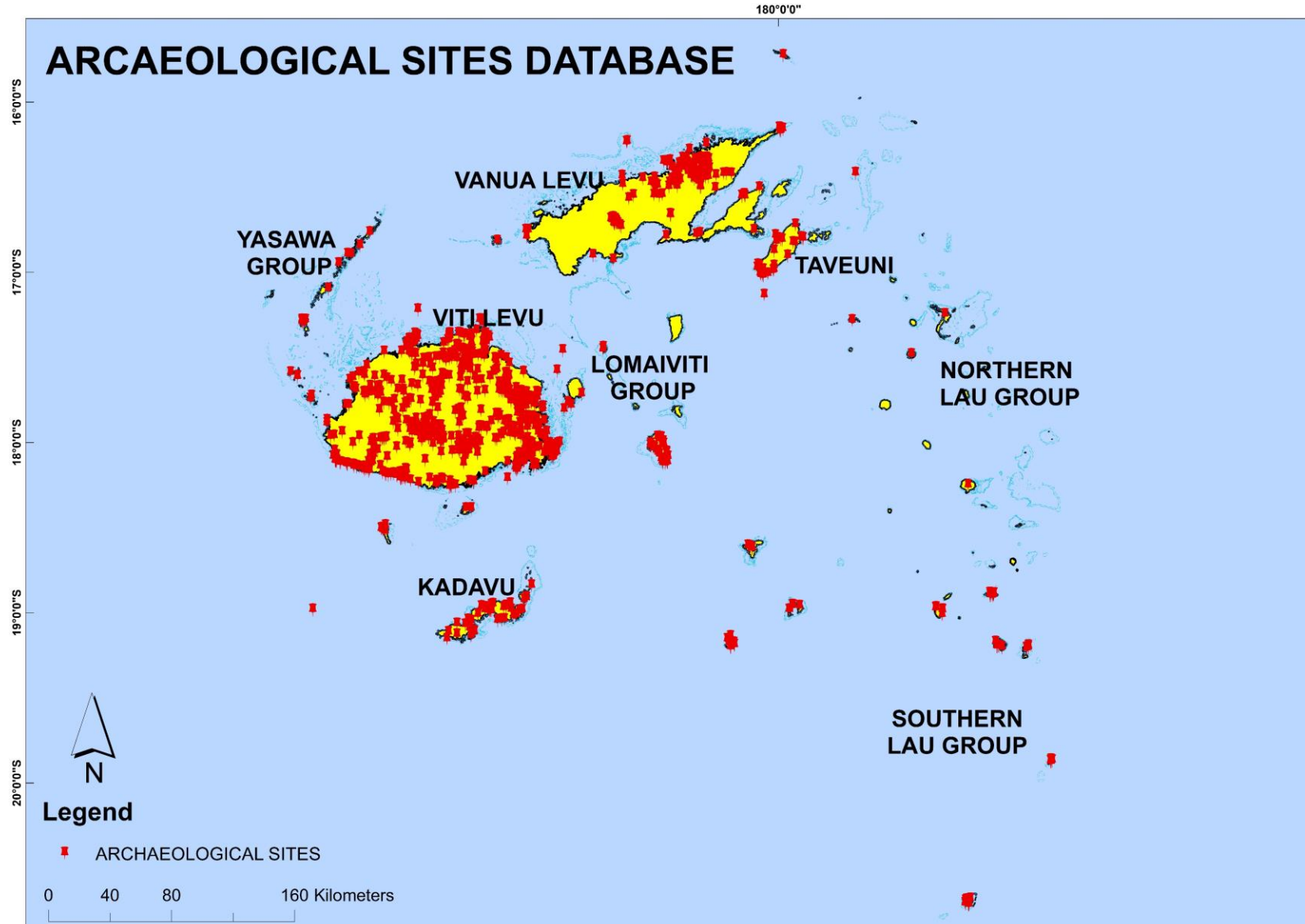
• RAPID BIODIVERSITY SURVEYS



• ECO-MUSEUMS/TOURISM



ARCHAEOLOGICAL SITES DATABASE



CHALLENGES

- HUMAN RESOURCES
- LAND DISPUTES
- LACK OF COLLABORATION WITH KEY AUTHORITIES
- LACK OF AWARENESS