



Kingston + Arthur's Vale Historic Area (KAVHA) Cultural Landscape Management Plan

2018 Culture: Conserving it Together

Conference: Suva, Fiji - Australia ICOMOS + ICOMOS Pasifika

GMLCONTEXT



A Cultural Landscape Management Plan
Kingston + Arthur's Vale Historic Area, 2018

GMLC **CONTEXT**



A Cultural Landscape Management Plan
Kingston + Arthur's Vale Historic Area, 2018

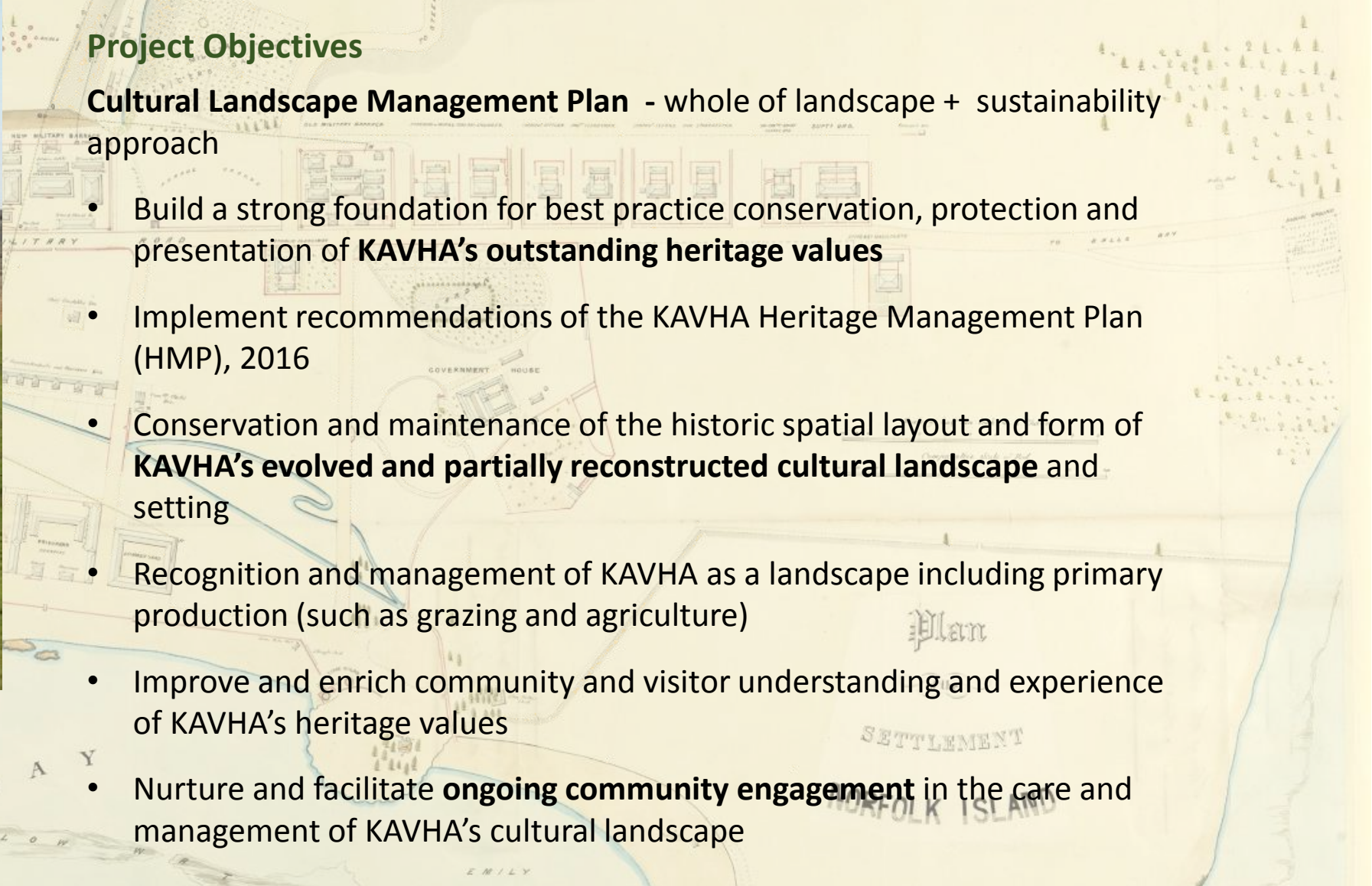
GMLCONTEXT



Project Objectives

Cultural Landscape Management Plan - whole of landscape + sustainability approach

- Build a strong foundation for best practice conservation, protection and presentation of **KAVHA's outstanding heritage values**
- Implement recommendations of the KAVHA Heritage Management Plan (HMP), 2016
- Conservation and maintenance of the historic spatial layout and form of **KAVHA's evolved and partially reconstructed cultural landscape** and setting
- Recognition and management of KAVHA as a landscape including primary production (such as grazing and agriculture)
- Improve and enrich community and visitor understanding and experience of KAVHA's heritage values
- Nurture and facilitate **ongoing community engagement** in the care and management of KAVHA's cultural landscape



A Cultural Landscape Management Plan
Kingston + Arthur's Vale Historic Area, 2018

GMLCONTEXT



The project

- Kingston + Arthur's Vale Historic Area: Cultural Landscape Management Plan

The client

- KAVHA Secretariat, Commonwealth Department of Infrastructure, Regional Development + Cities

Stakeholders

- KAVHA Advisory Committee, Commonwealth Heritage Manager, Commonwealth Administrator
- Norfolk Island Cattle Association
- KAVHA Landholders: freehold and leasehold
- Norfolk Island Regional Council staff, incl. KAVHA works crew, planning and environmental staff and museums staff.
- Tourism Managers



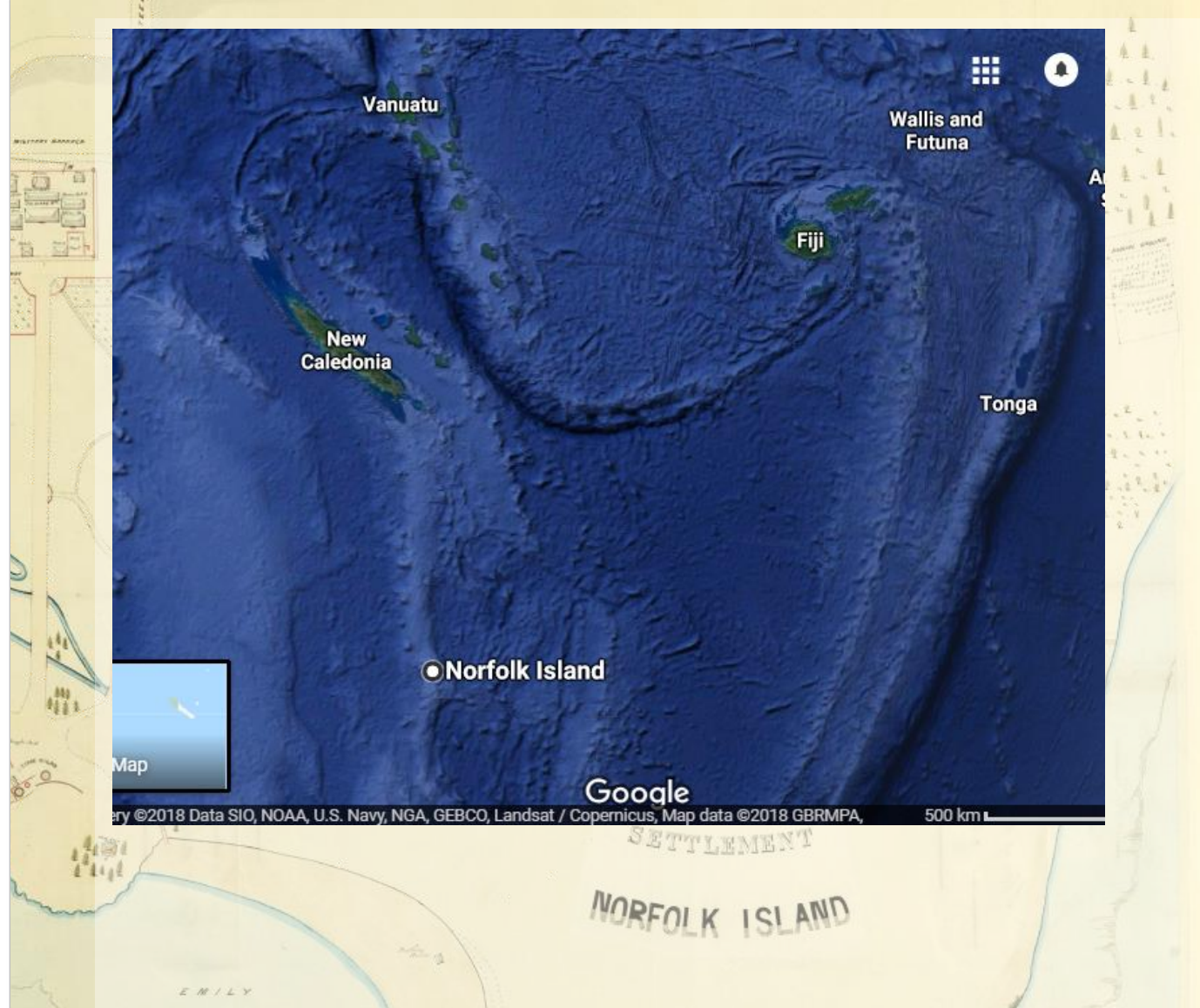


Project team

- Dr Christina Dyson – Cultural landscape specialist, Project Manager, GML Context
- Rachel Jackson – Heritage specialist, Project Director, GML Context
- John Dyke – Heritage specialist and landscape architect, GML Context
- Adam Hunter – Senior landscape architect, EP Environmental Partnership
- Nicole Eva – Landscape architect, EP Environmental Partnership

A Cultural Landscape Management Plan
Kingston + Arthur's Vale Historic Area, 2018

GMLCONTEXT



GMLC●NTEXT

Norfolk Island is located in the south Pacific Ocean, approximately 1400km east of mainland Australia. (Source: KAVHA CMP, 2007)



High Priority Cultural Landscape Issues

Proposals for Specific Projects

- 1. Vehicle and Pedestrian Access
- 2. Vegetation Management
- 3. Livestock Management
- 4. Site Drainage and Water Quality

1. Vehicle and Pedestrian Access

An opportunity to rethink / re-conceptualise how people and vehicles access, move through, stop, and experience KAVHA.

KAVHA should meet existing best practice associated with visitor management within a World Heritage site.

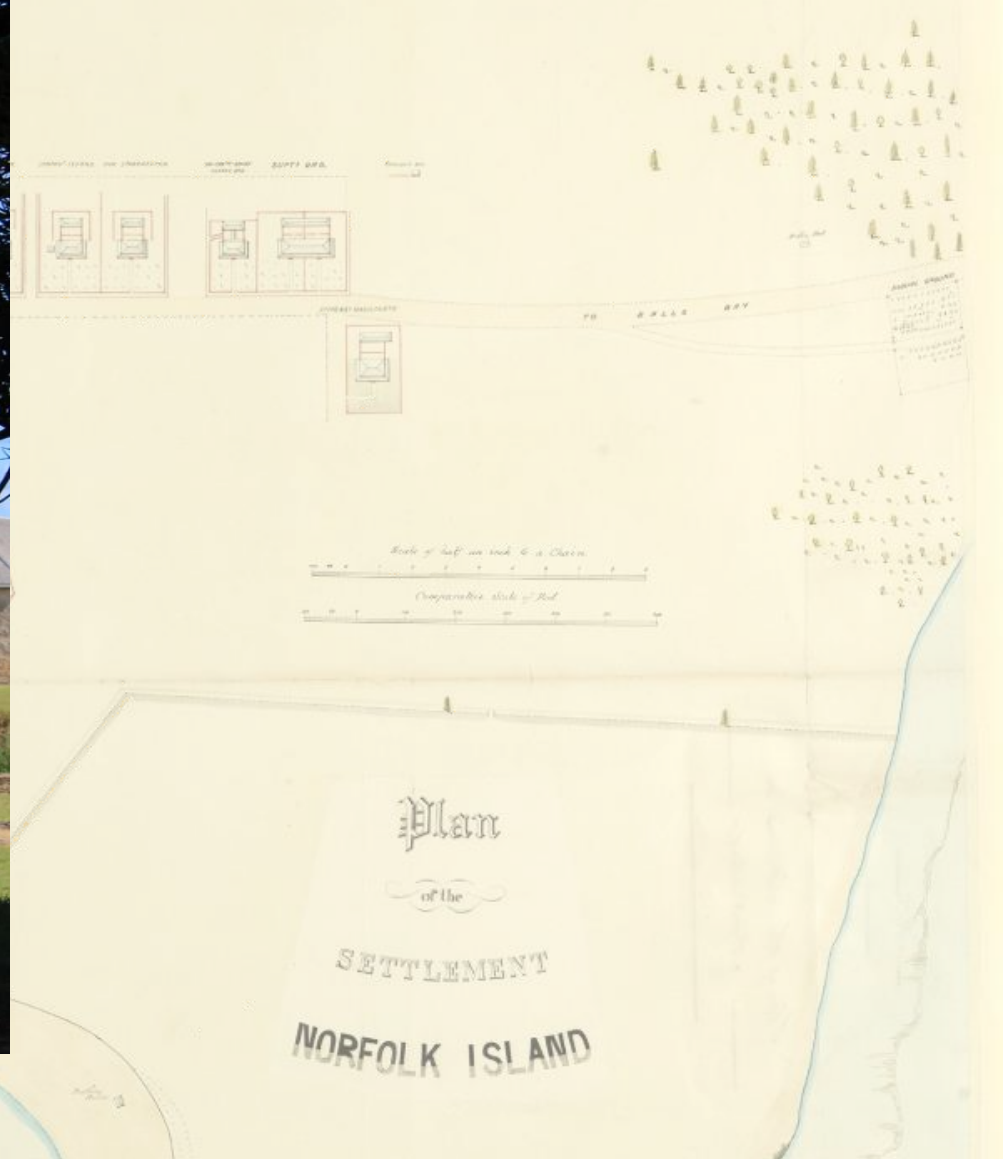
- Issues and challenges, incl. archaeological and visual impact
- Existing movement routes and circulation patterns
- Pier area - notional hub
- Four objectives inform the Proposals / Actions
- Three 'whole of site' recommendations (minimal change, medium and long term interventions)
- Two options for visitor arrival/access
- Graded walking tracks for different abilities





A Cultural Landscape Management Plan
Kingston + Arthur's Vale Historic Area, 2018

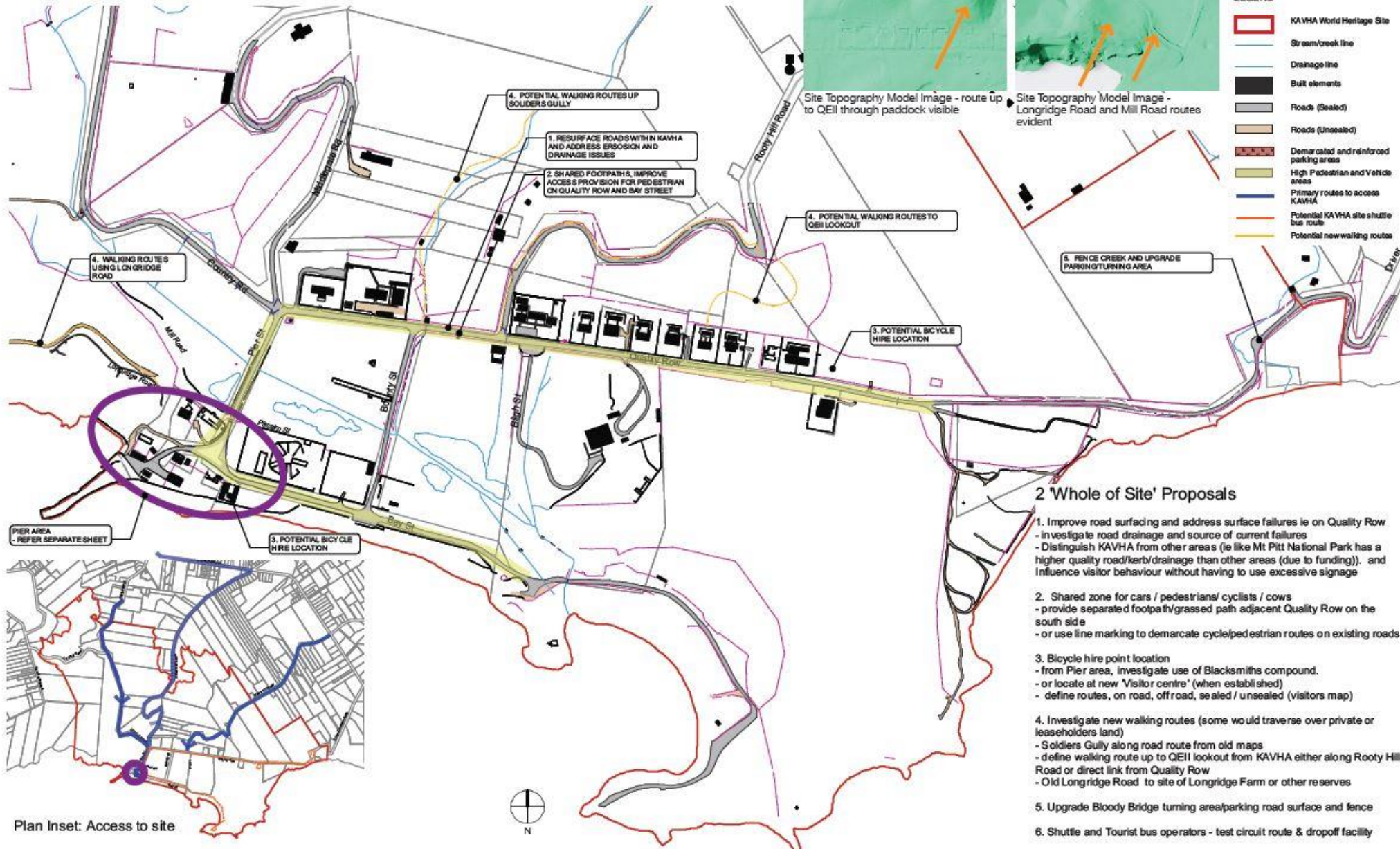
GMLC  **CONTEXT**



A Cultural Landscape Management Plan
Kingston + Arthur's Vale Historic Area, 2018

01 Vehicle and Pedestrian Access - Proposals

1.2 Medium term recommendations



Plan Inset: Access to site

2 'Whole of Site' Proposals

1. Improve road surfacing and address surface failures ie on Quality Row
 - Investigate road drainage and source of current failures
 - Distinguish KAVHA from other areas (ie like Mt Pitt National Park has a higher quality road/kerb/drainage than other areas (due to funding)), and influence visitor behaviour without having to use excessive signage
2. Shared zone for cars / pedestrians/ cyclists / cows
 - provide separate footpath/grassed path adjacent Quality Row on the south side
 - or use line marking to demarcate cycle/pedestrian routes on existing roads
3. Bicycle hire point location
 - from Pier area, investigate use of Blacksmiths compound,
 - or locate at new 'Visitor centre' (when established)
 - define routes, on road, off road, sealed / unsealed (visitors map)
4. Investigate new walking routes (some would traverse over private or leaseholders land)
 - Soldiers Gully along road route from old maps
 - define walking route up to QEII lookout from KAVHA either along Rooty Hill Road or direct link from Quality Row
 - Old Longridge Road to site of Longridge Farm or other reserves
5. Upgrade Bloody Bridge turning area/parking road surface and fence
6. Shuttle and Tourist bus operators - test circuit route & dropoff facility

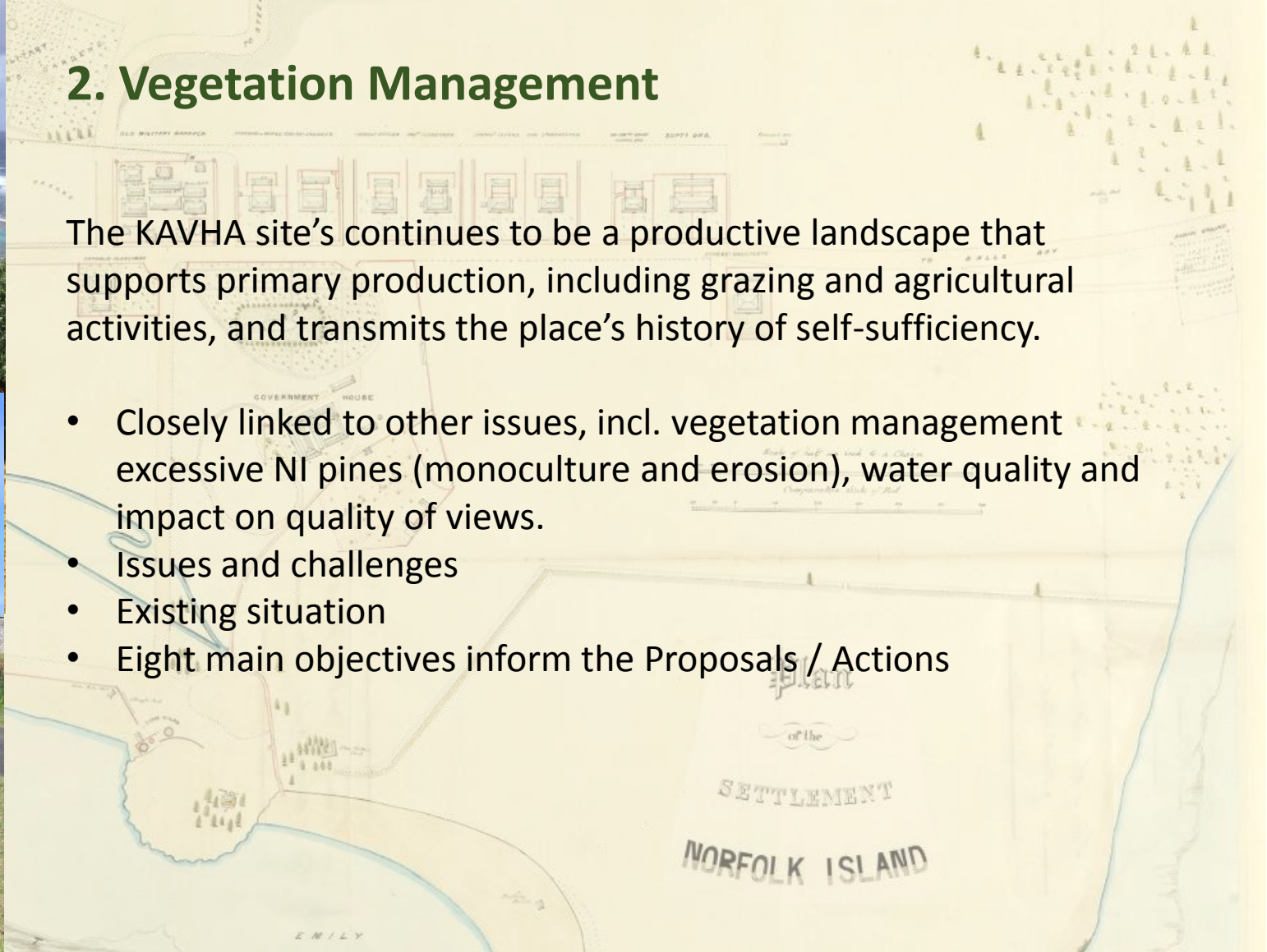




2. Vegetation Management

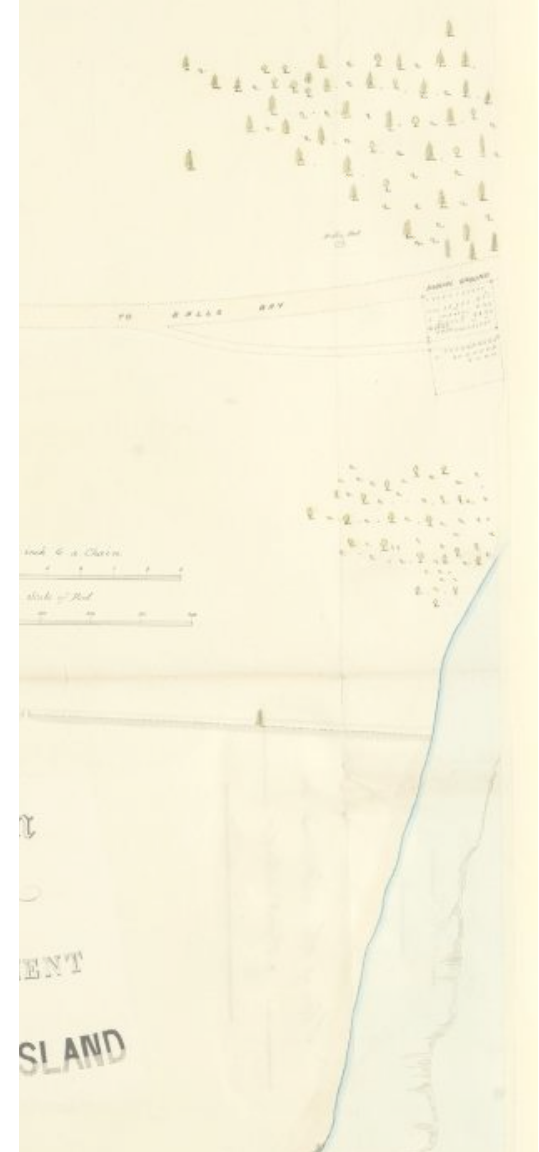
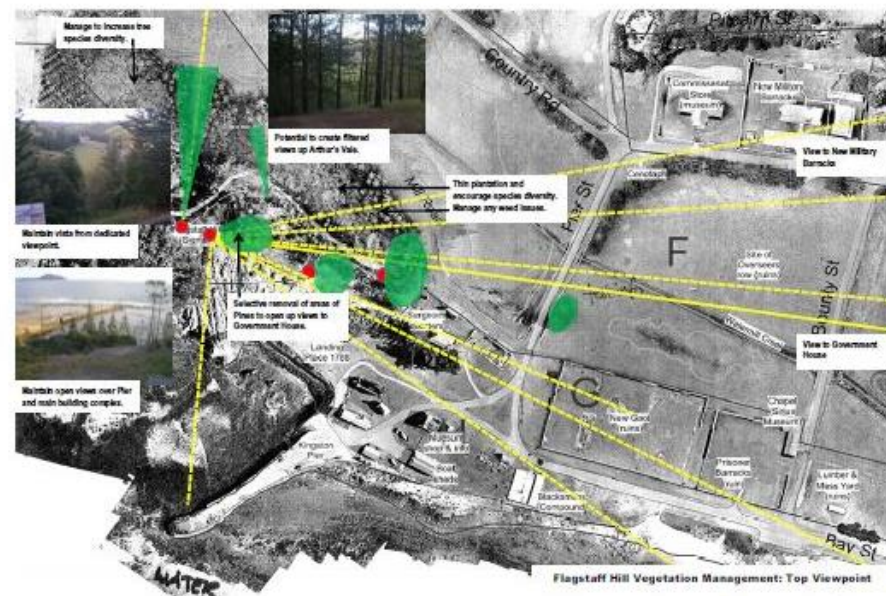
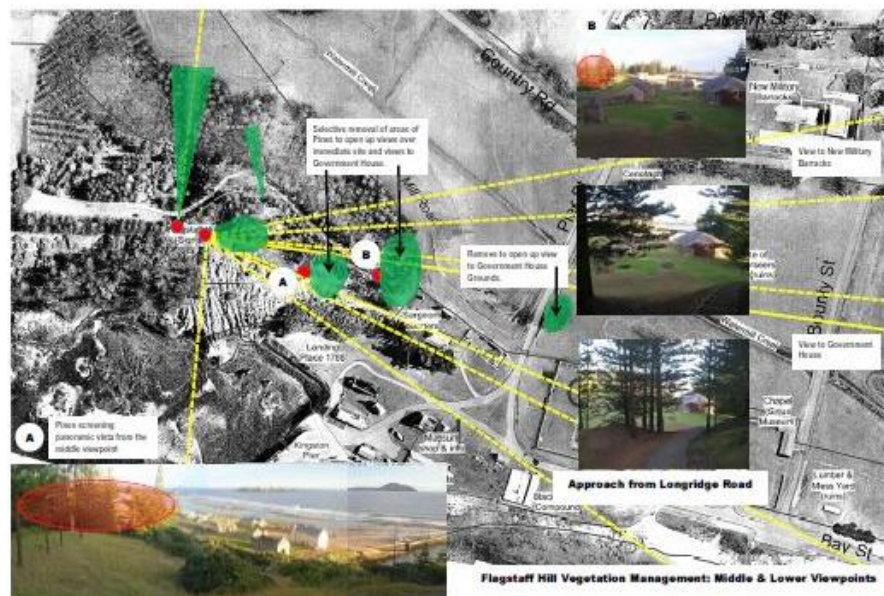
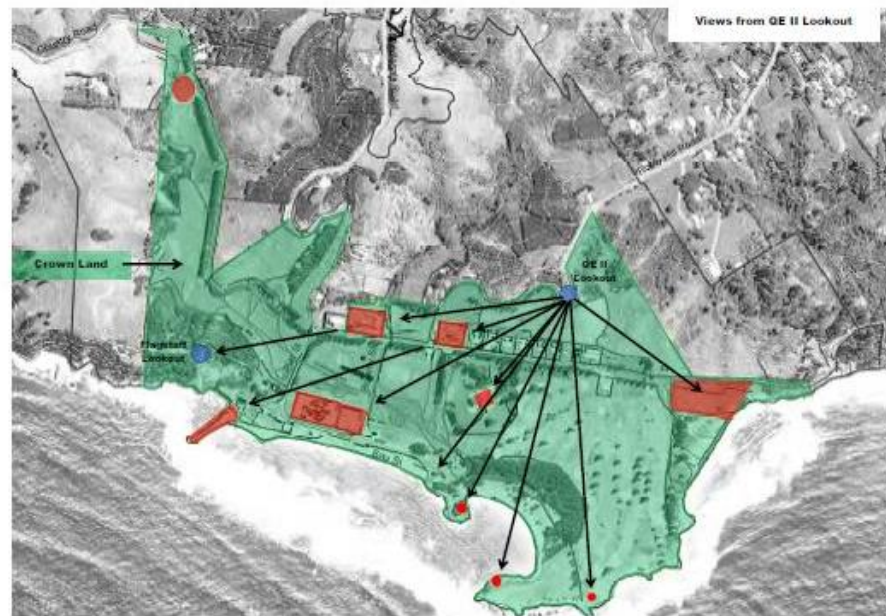
The KAVHA site's continues to be a productive landscape that supports primary production, including grazing and agricultural activities, and transmits the place's history of self-sufficiency.

- Closely linked to other issues, incl. vegetation management excessive NI pines (monoculture and erosion), water quality and impact on quality of views.
- Issues and challenges
- Existing situation
- Eight main objectives inform the Proposals / Actions



03 Vegetation Management - Proposals

Detailed Area A - Flagstaff Hill

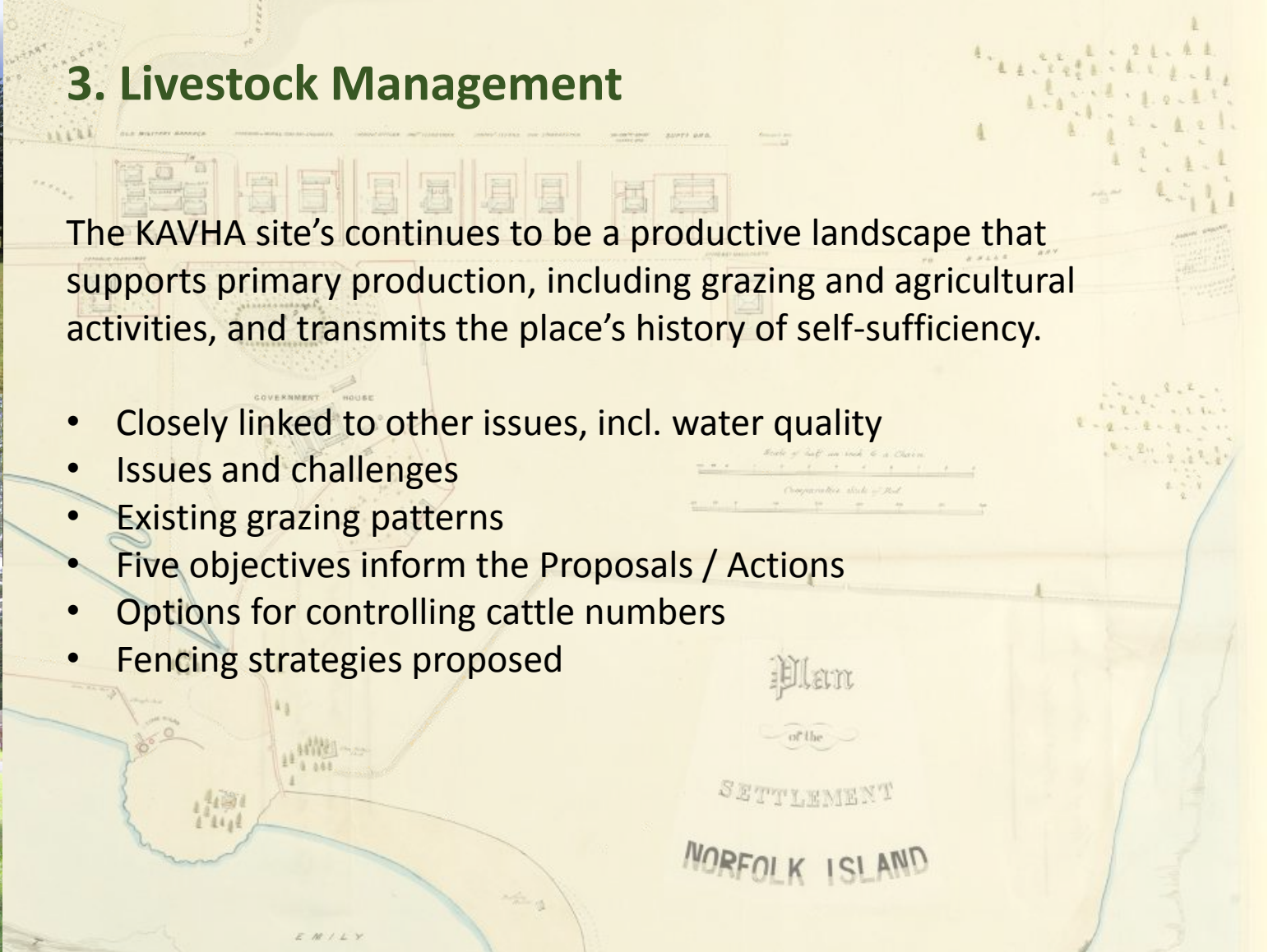




3. Livestock Management

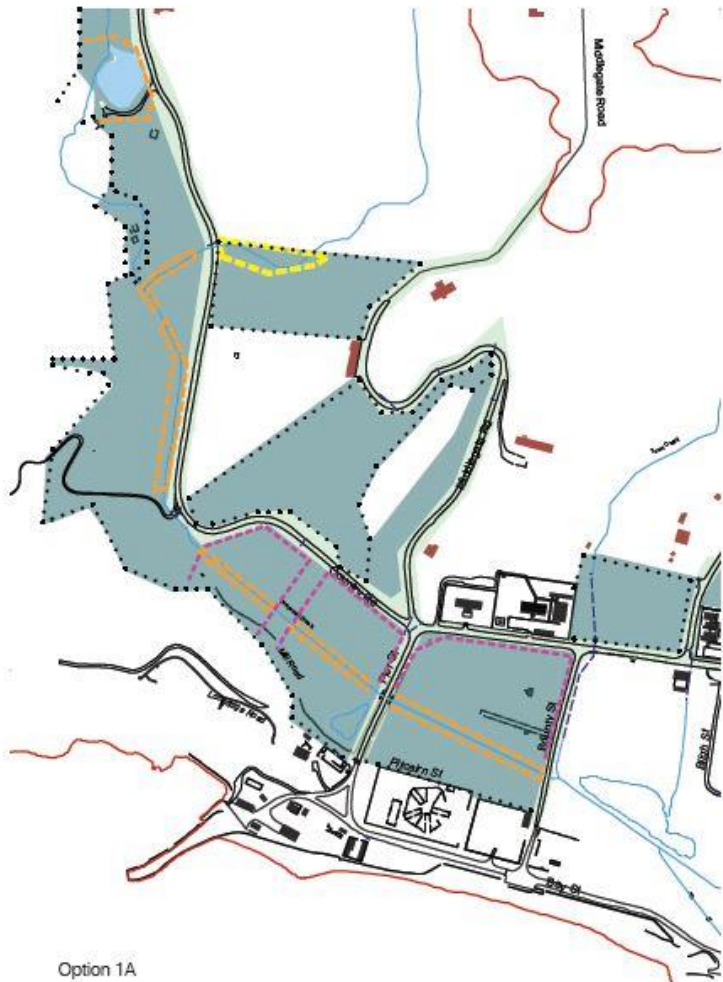
The KAVHA site's continues to be a productive landscape that supports primary production, including grazing and agricultural activities, and transmits the place's history of self-sufficiency.

- Closely linked to other issues, incl. water quality
- Issues and challenges
- Existing grazing patterns
- Five objectives inform the Proposals / Actions
- Options for controlling cattle numbers
- Fencing strategies proposed



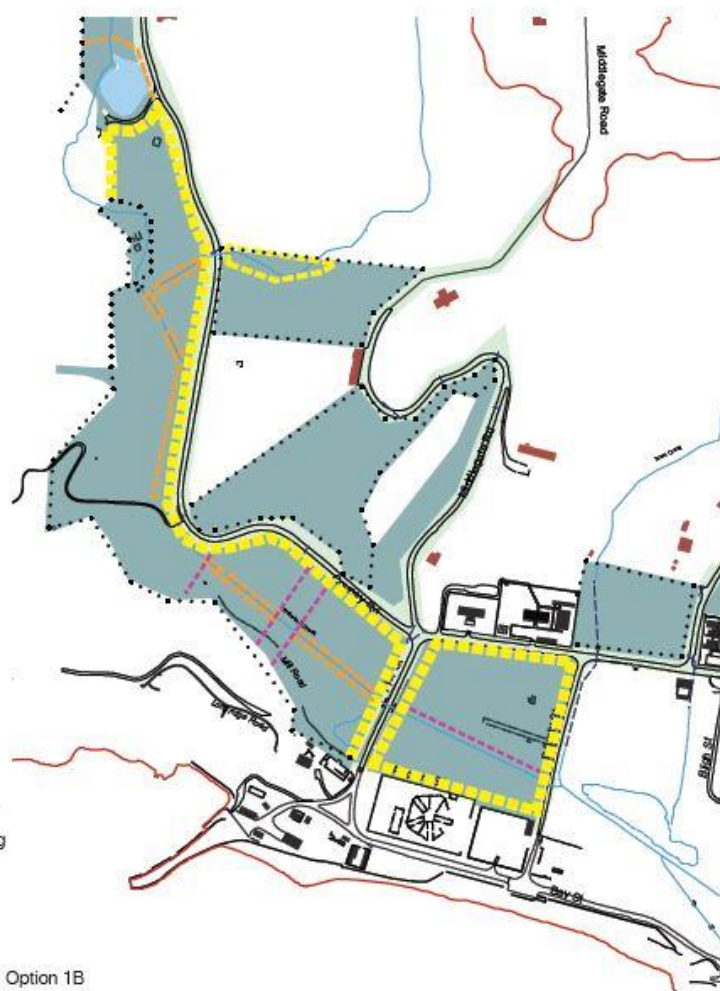
02 Livestock Management - Proposals

Potential Fencing Strategies



Option 1A

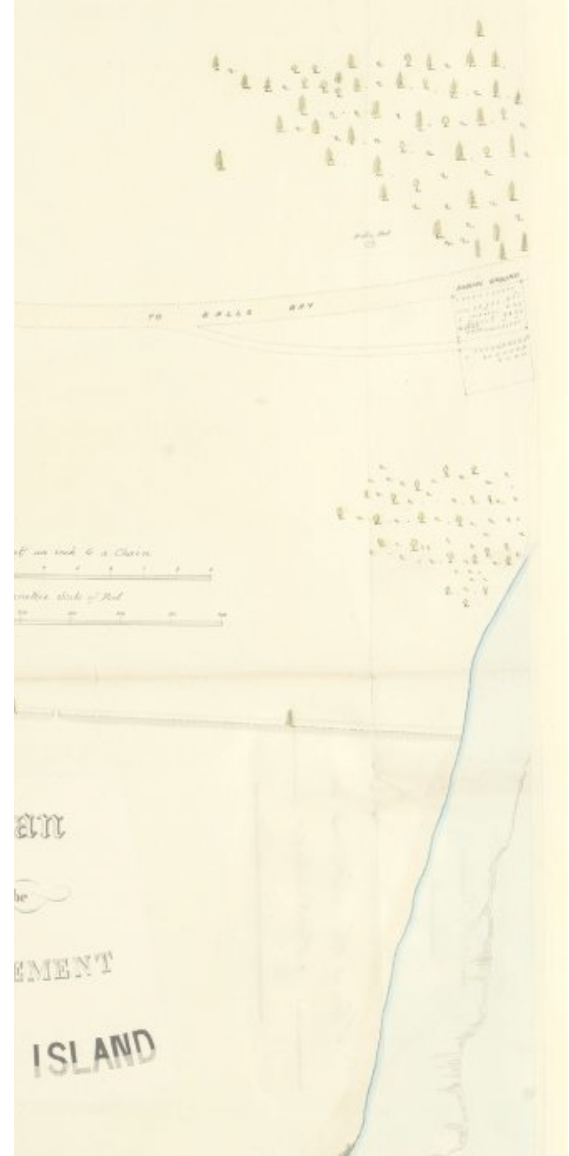
- install cattle grids on roads into KAVHA to create a 'zone' for movement of cattle without being overly restrictive to control cattle numbers, retain open nature of reserves by limiting permanent fences (refer separate plan)
- permanently fence creek line with minimum buffer zone of 5m either side with strategically located crossings for livestock, vehicles, pedestrians
- temporary fences in Arthur's Vale and reserve between Pier and Bounty street to allow alternative agricultural uses and ability to exclude cattle for periods of time



Option 1B

- permanently fence Kingston Common Reserve / Arthur's Vale allowing greater control of cattle across the reserves at all times
- permanently fence creek line with minimum buffer zone of 5m either side
- utilise areas with some additional temporary fencing where necessary to allow alternative agricultural uses and ability to exclude cattle for periods of time

- Permanent boundary fencing
- Permanent creek/dam fencing
- Temporary fencing
- Existing fenced paddock

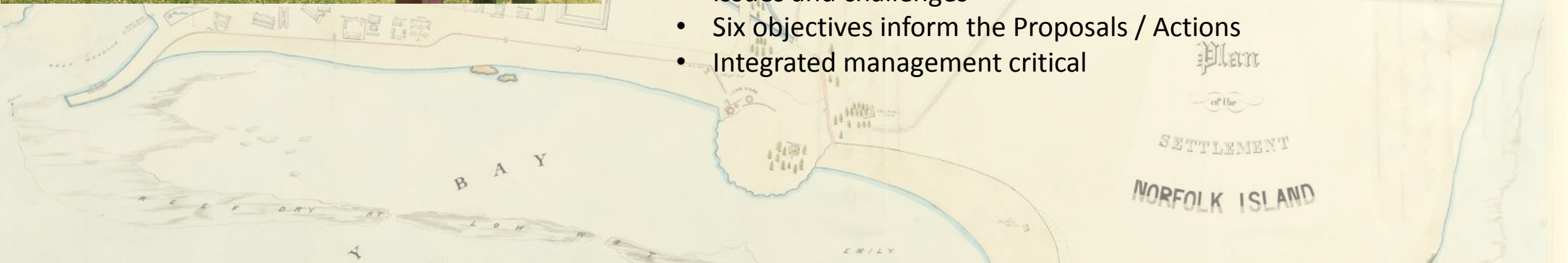




4. Site Drainage and Water Quality

A healthy system of creeks, waterways, swamps, channels and drains that has no adverse environmental impacts and that transmits the heritage values of the KAVHA site's cultural landscape

- Closely linked to other issues – incl. vegetation management
- Catchment-wide and KAVHA specific issues
- Issues and challenges
- Six objectives inform the Proposals / Actions
- Integrated management critical



04 Site Drainage and Water Quality - Proposals

Water management Principles

Proposals for site drainage and water quality should only be determined after comprehensive investigation of the whole system (catchment wide) that combines hydraulic, archaeological, ecological, landscape architecture, and heritage-related expertise; and integrated with forthcoming/continuing catchment-wide studies and investigations and improvements to water quality and wastewater management.

1. Treat and trap pollutants at entry points into KAVHA (on creek lines, drainage lines, stormwater)

- treatment of coliforms at Town creek (medium term goal for all buildings to be connected to sewerage system)
- install Gross Pollutant Trap's (GPT's) and silt/sediments arrestors

2. Slow speed of water to trap sediments and nutrients prior to entering downstream channels

- re-vegetate drainage gullies and steep eroded slopes
- re-vegetate creek and channel lines, enhanced ecology
- installation of retardation basins, new wetlands

3. Reduce volume of freshwater entering Emily Bay

- increase storage capacity within catchments by installation of retardation basins, wetlands, leaky weirs on creek lines
- (*"doubling storage capacity of Watermill Creek catchment would result in a five-fold decrease in number of run-off events that ran directly to sea" 1997 WR*)

4. Management and Monitoring

- ongoing Water management and monitoring plan to include regular testing of water quality
- regular management of plants in channels to retain appearance of historic channels and diversity in native species
- regular noxious weed control

5. Heritage interpretation

- interpret c. 1835-38 layout of the Serpentine on the ground
- remove 1940's channel?

6. Sustainability and Future proofing

- diversion of fresh water from the Serpentine area to a storage facility for reuse
- diversion of fresh water to an separate ocean outfall for major rain/flood events?

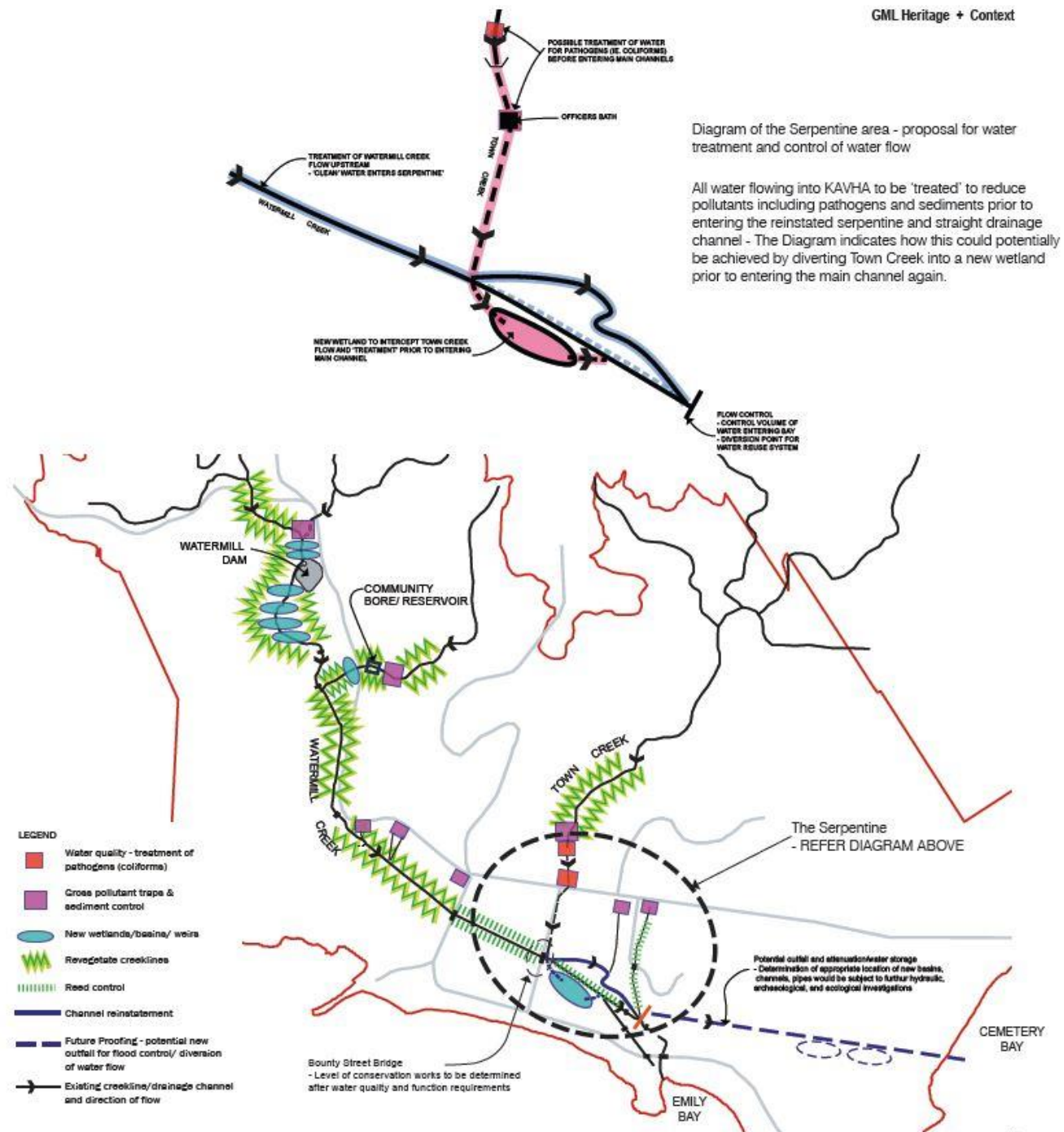
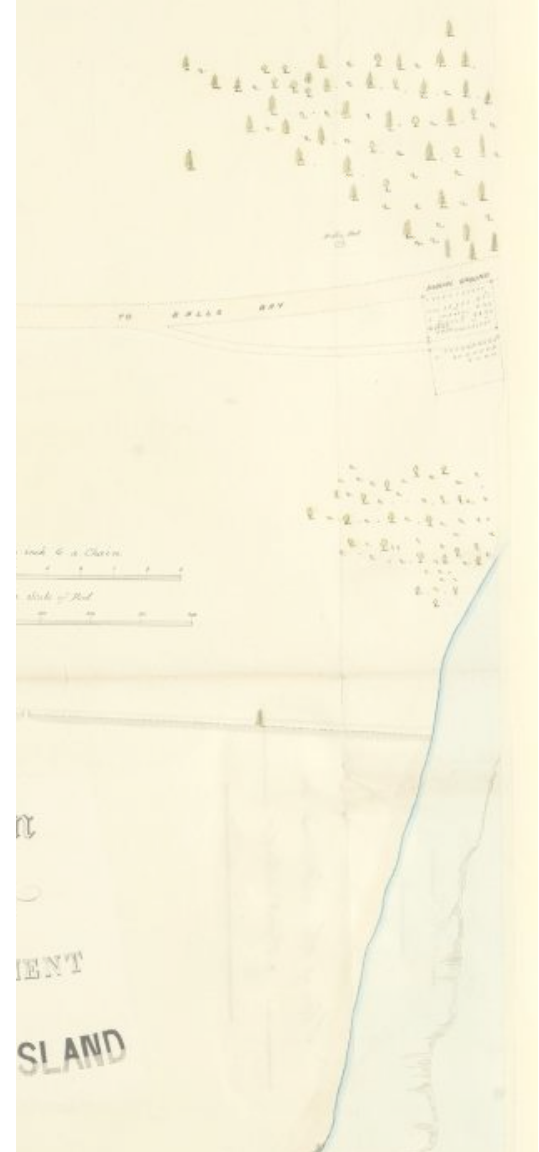
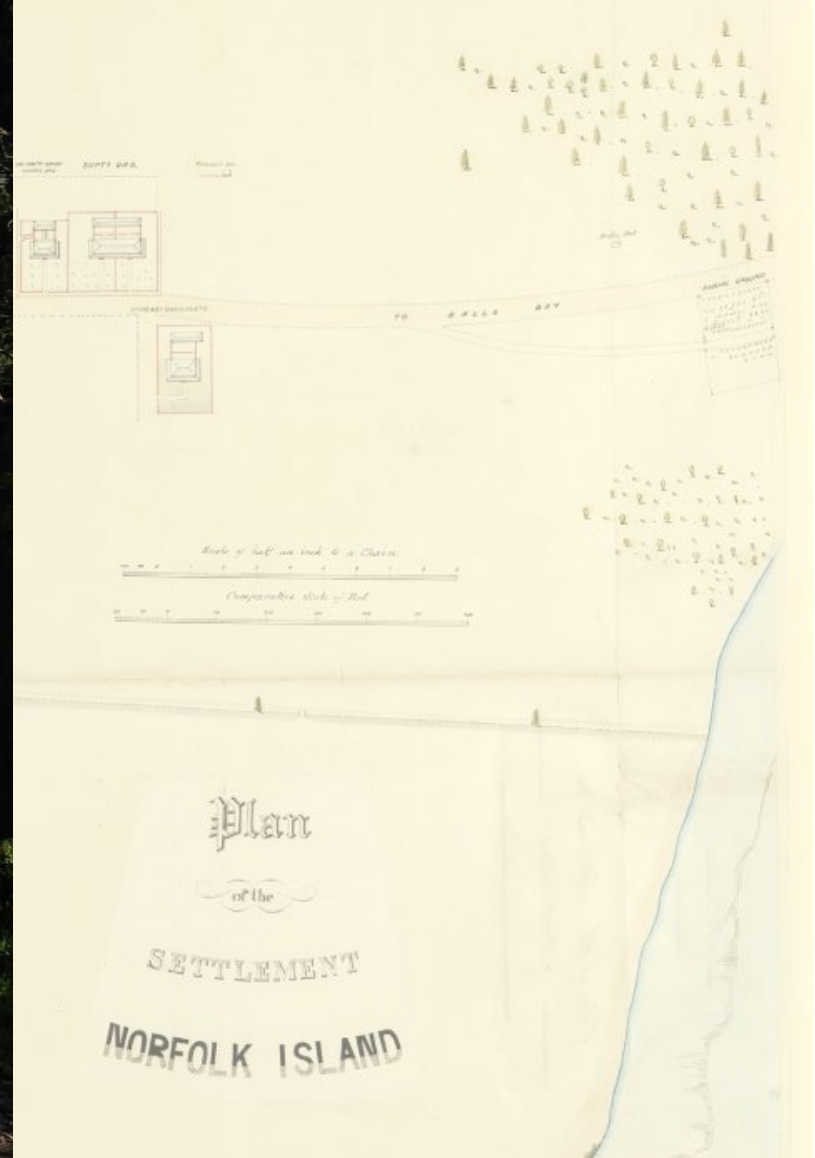


Diagram of the Serpentine area - proposal for water treatment and control of water flow

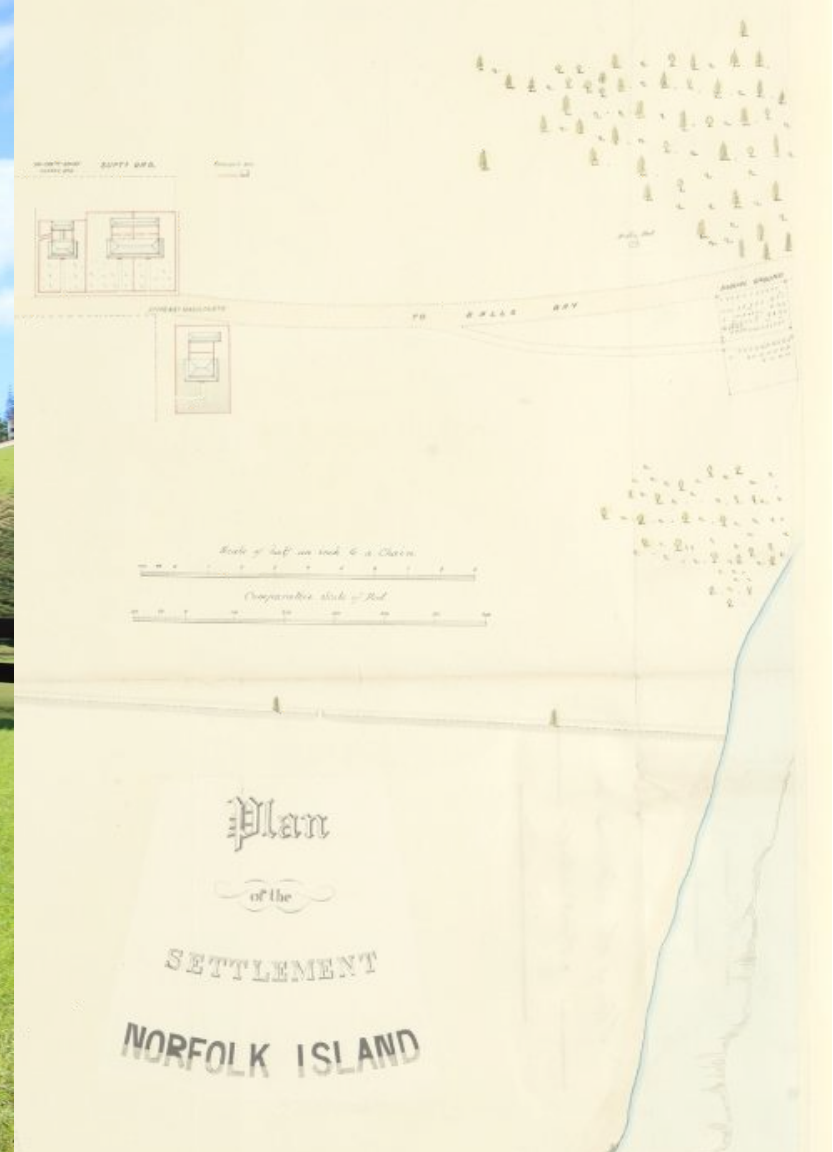
All water flowing into KAVHA to be 'treated' to reduce pollutants including pathogens and sediments prior to entering the reinstated serpentine and straight drainage channel - The Diagram indicates how this could potentially be achieved by diverting Town Creek into a new wetland prior to entering the main channel again.





A Cultural Landscape Management Plan
Kingston + Arthur's Vale Historic Area, 2018

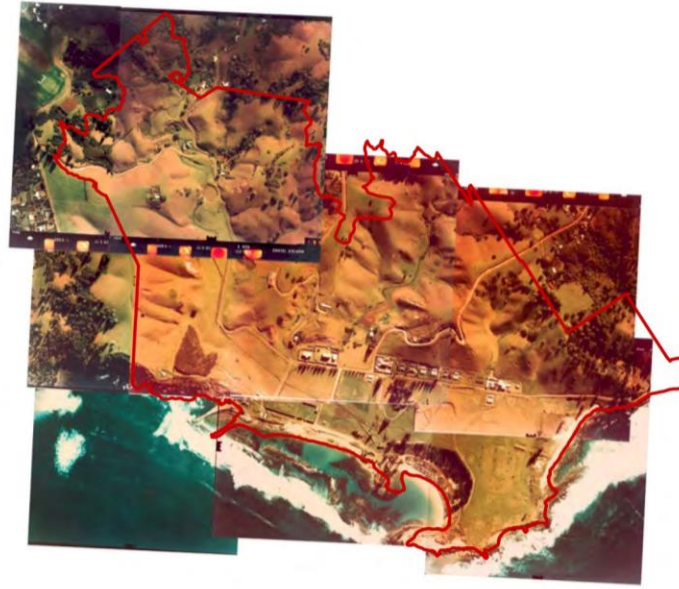
GMLCONTEXT



A Cultural Landscape Management Plan
Kingston + Arthur's Vale Historic Area, 2018



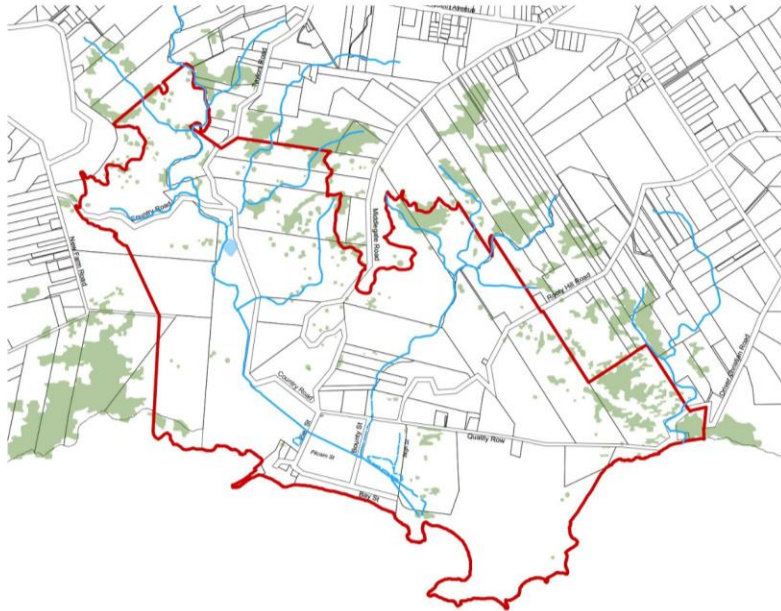
1944 Aerial



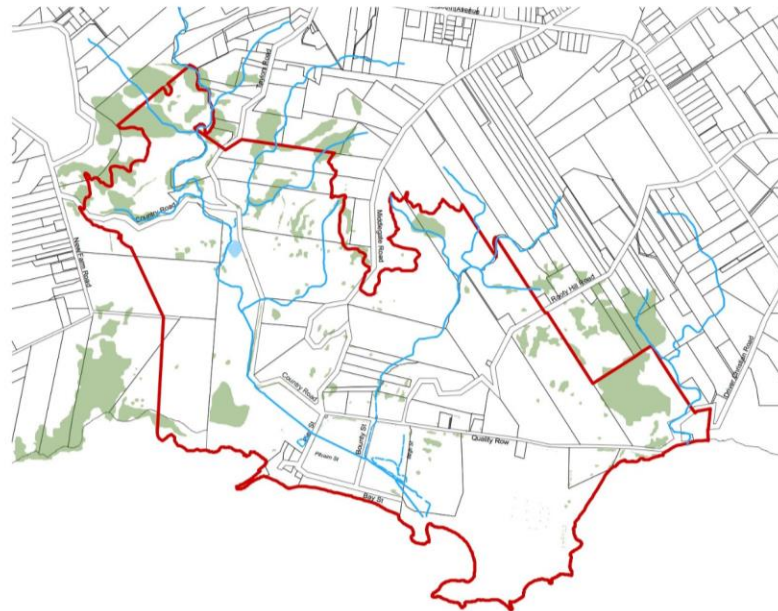
1977 Aerials (compiled)



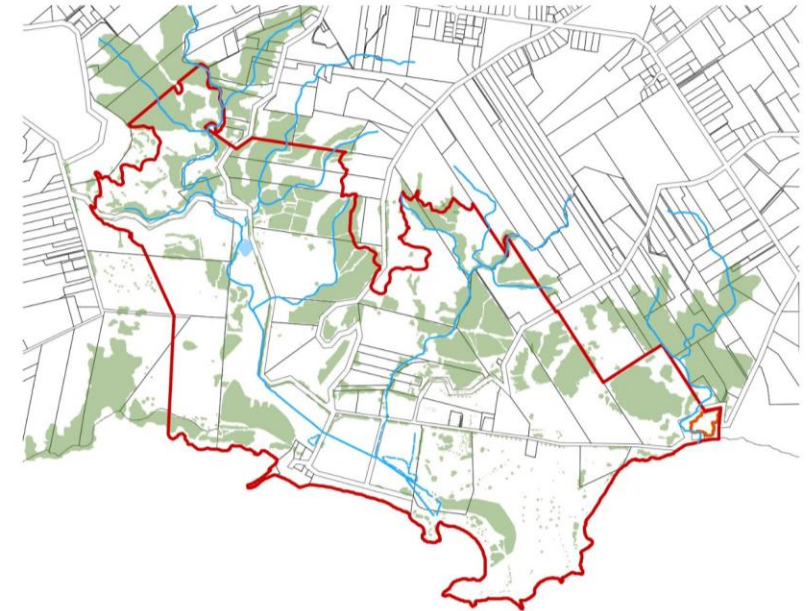
Current Aerial



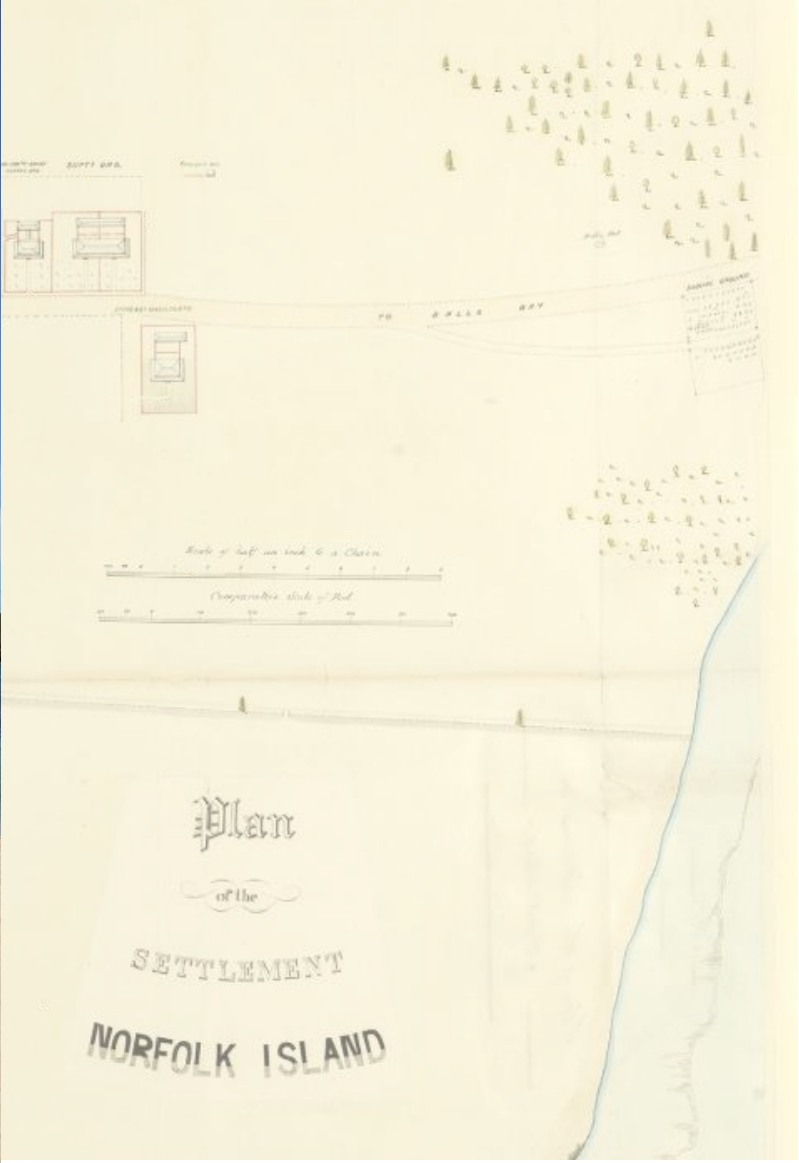
Vegetation based on 1944 Aerial



Vegetation based on 1977 Aerial



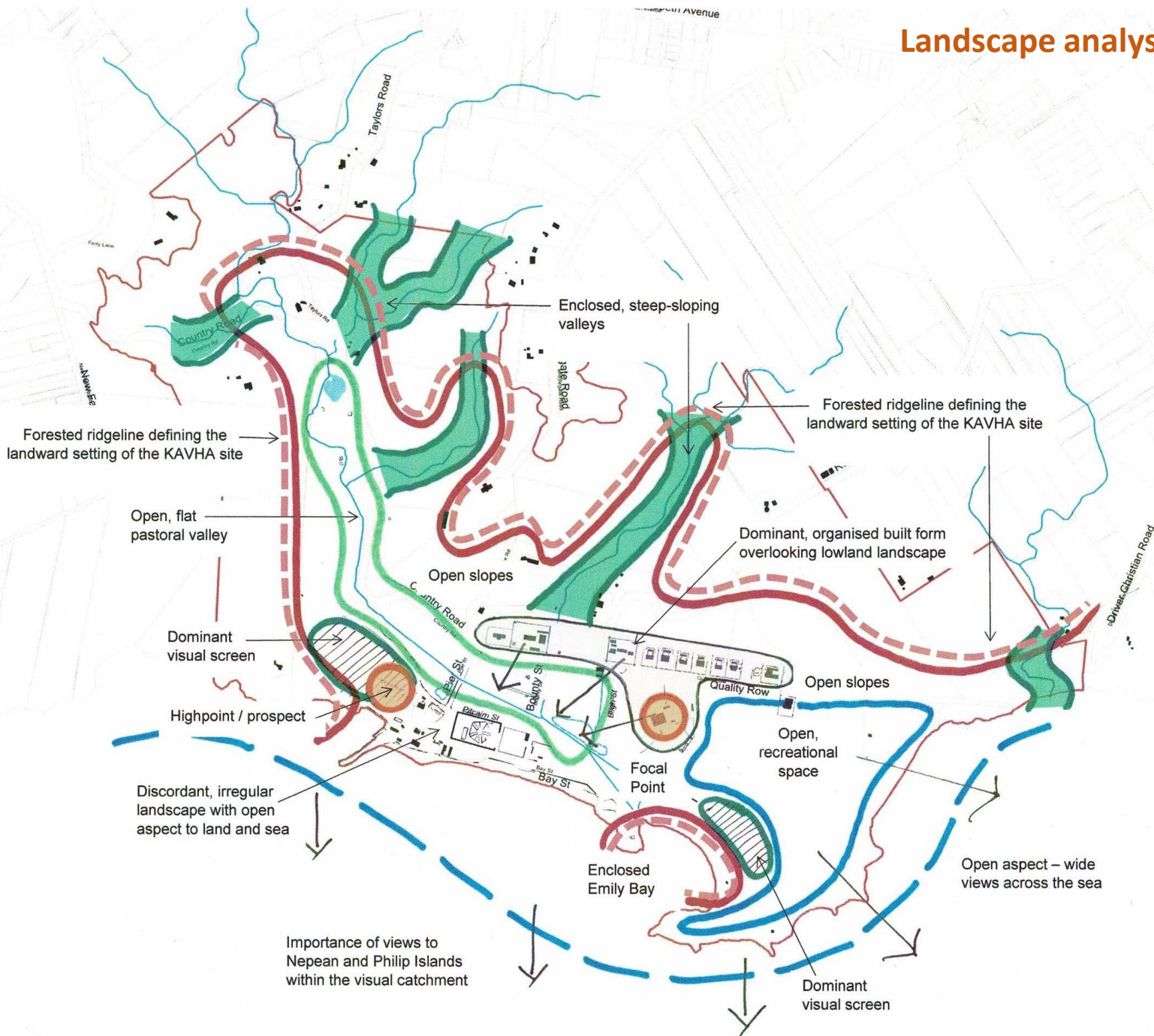
Vegetation based on Current Aerial



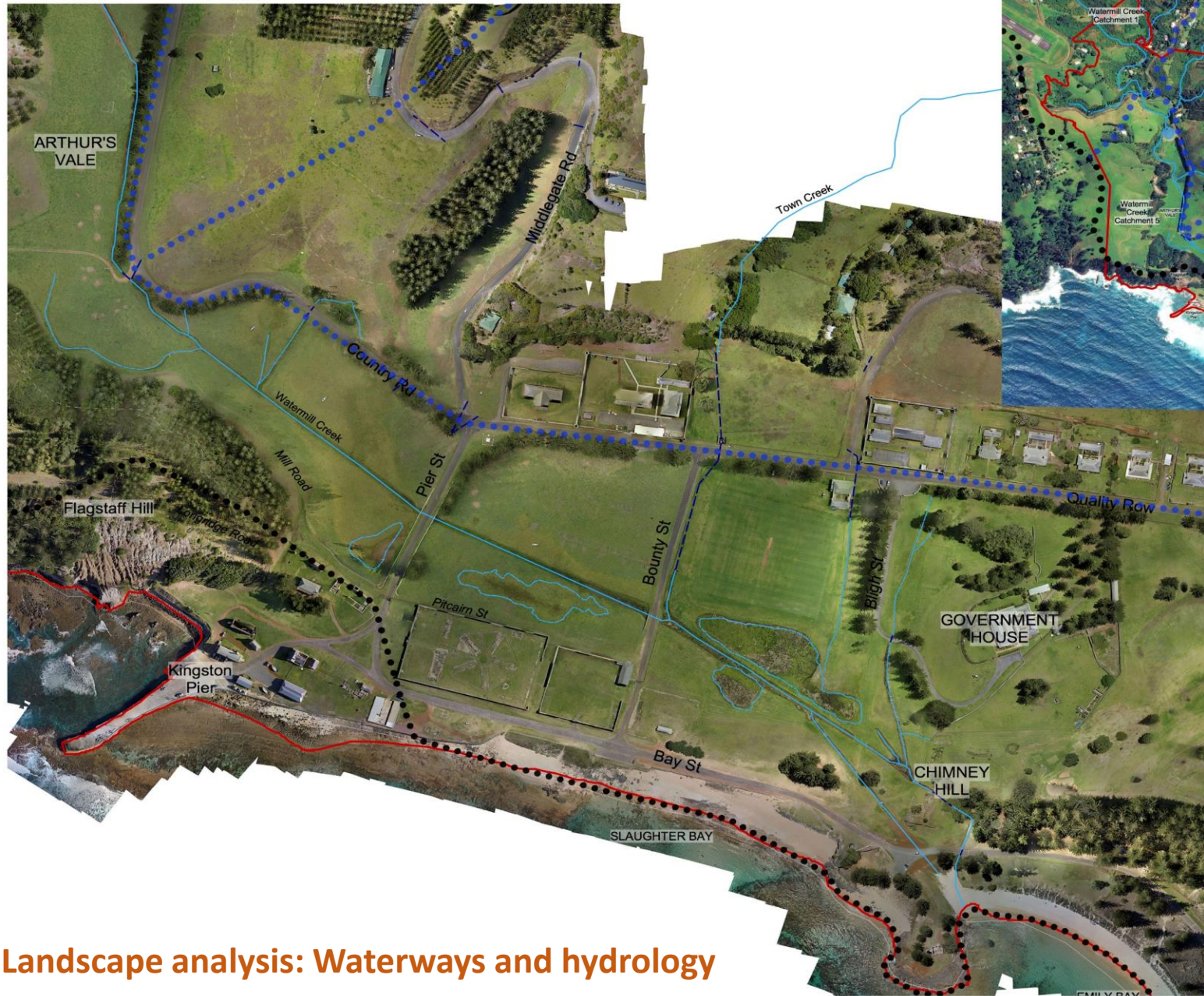
A Cultural Landscape Management Plan
Kingston + Arthur's Vale Historic Area, 2018

GMLCONTEXT

Landscape analysis: character



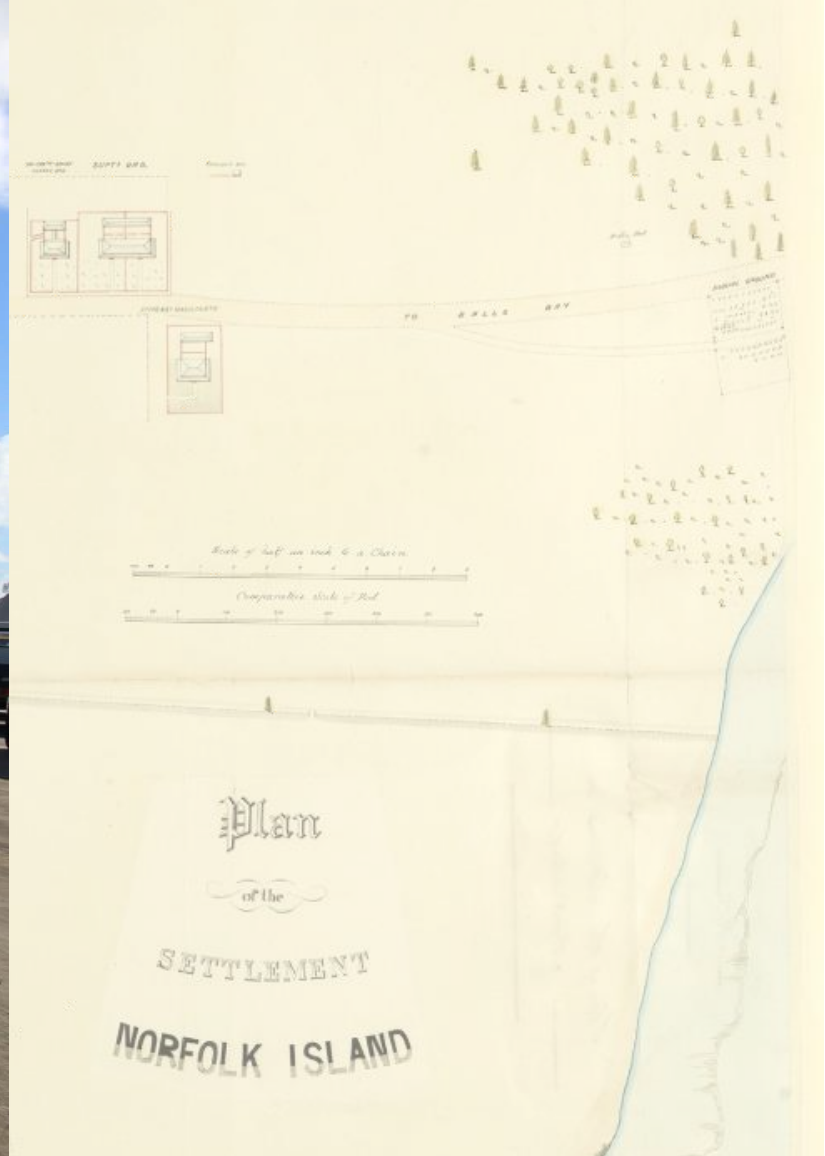
GMLCONTEXT



- LEGEND
- KAVHA World Heritage Site
 - 20m Contour interval
 - Waterbody
 - Stream/creek line
 - Drainage line
 - Drainage line - piped
 - ● ● ● Water Catchment
 - ● ● ● Water subcatchment

Scale: NTS

Landscape analysis: Waterways and hydrology



A Cultural Landscape Management Plan
Kingston + Arthur's Vale Historic Area, 2018

GMLCONTEXT

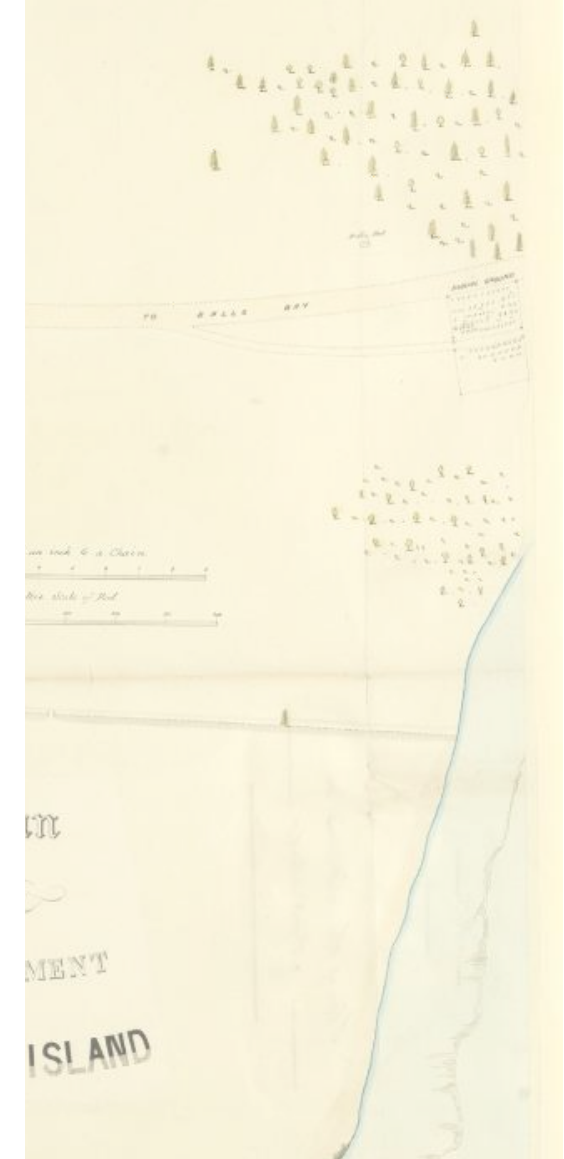
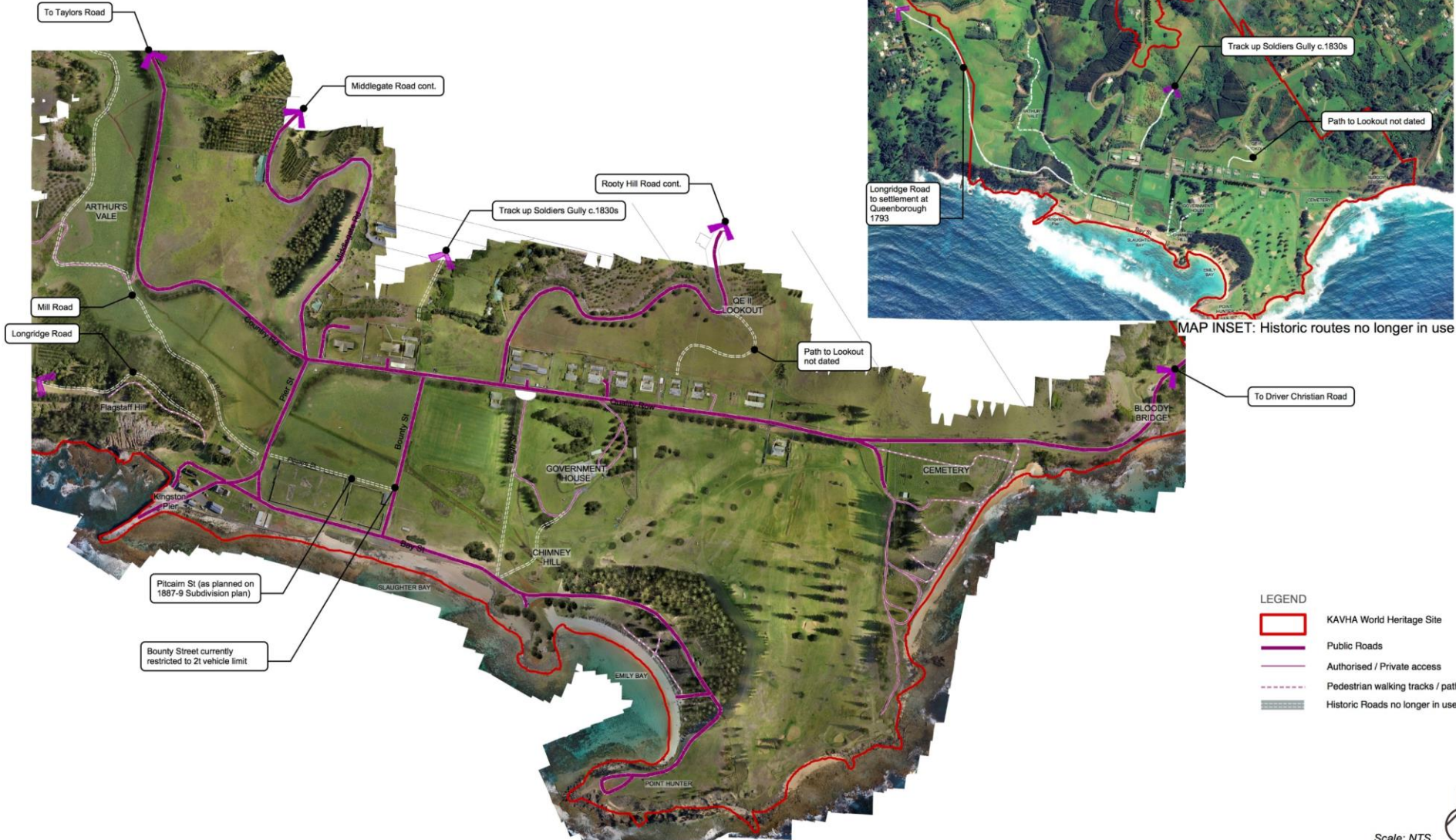


Foundation Day, 2018 – celebration of the day of the arrival British First Fleet on Norfolk Island on the 6 March 1788



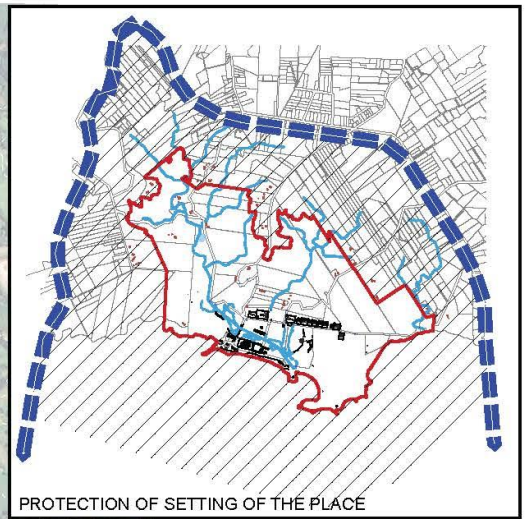
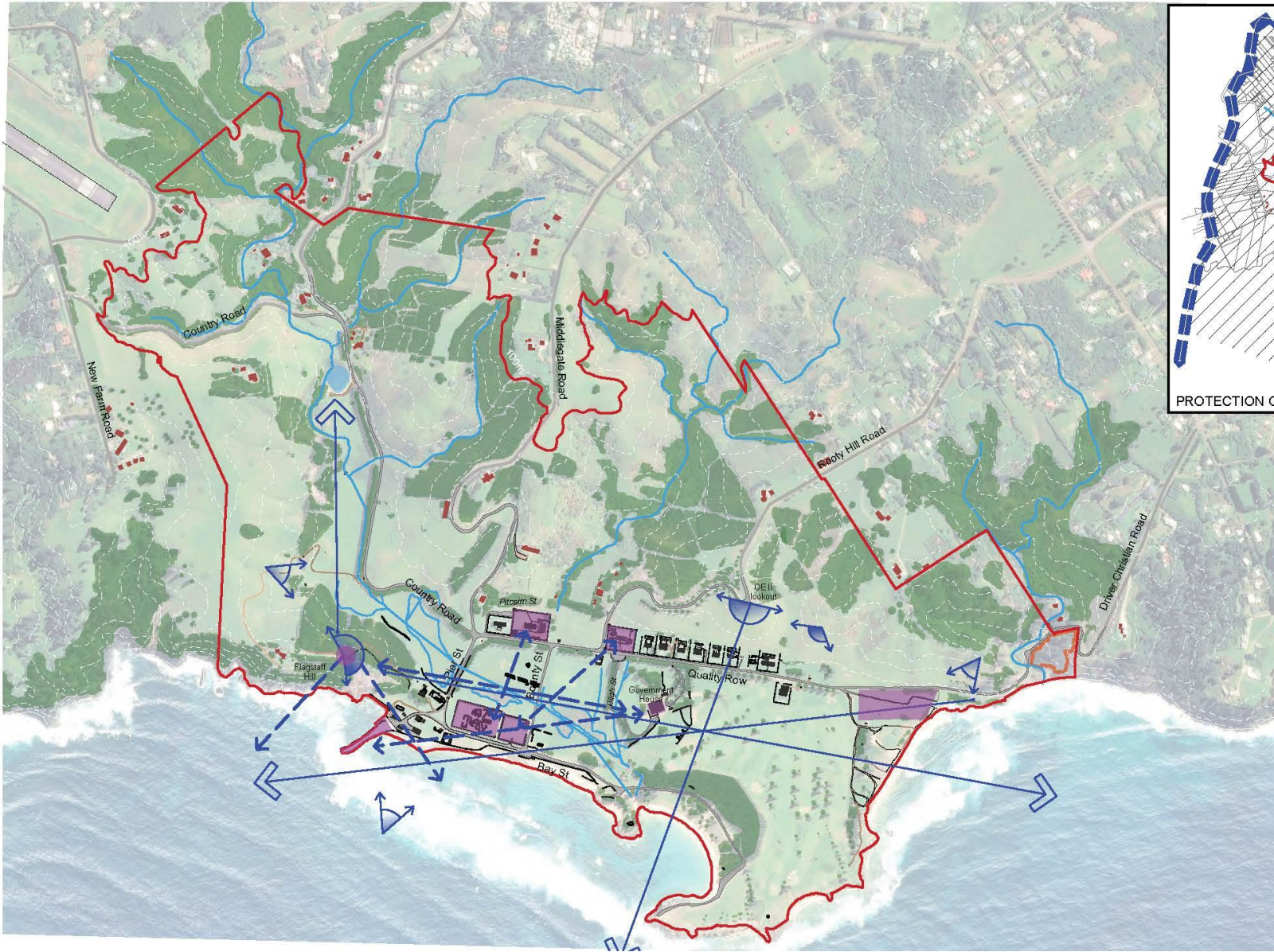
Foundation Day, 2018 – celebration of the day of the arrival
British First Fleet on Norfolk Island on the 6 March 1788

GMLCCONTEXT



Scale: NTS

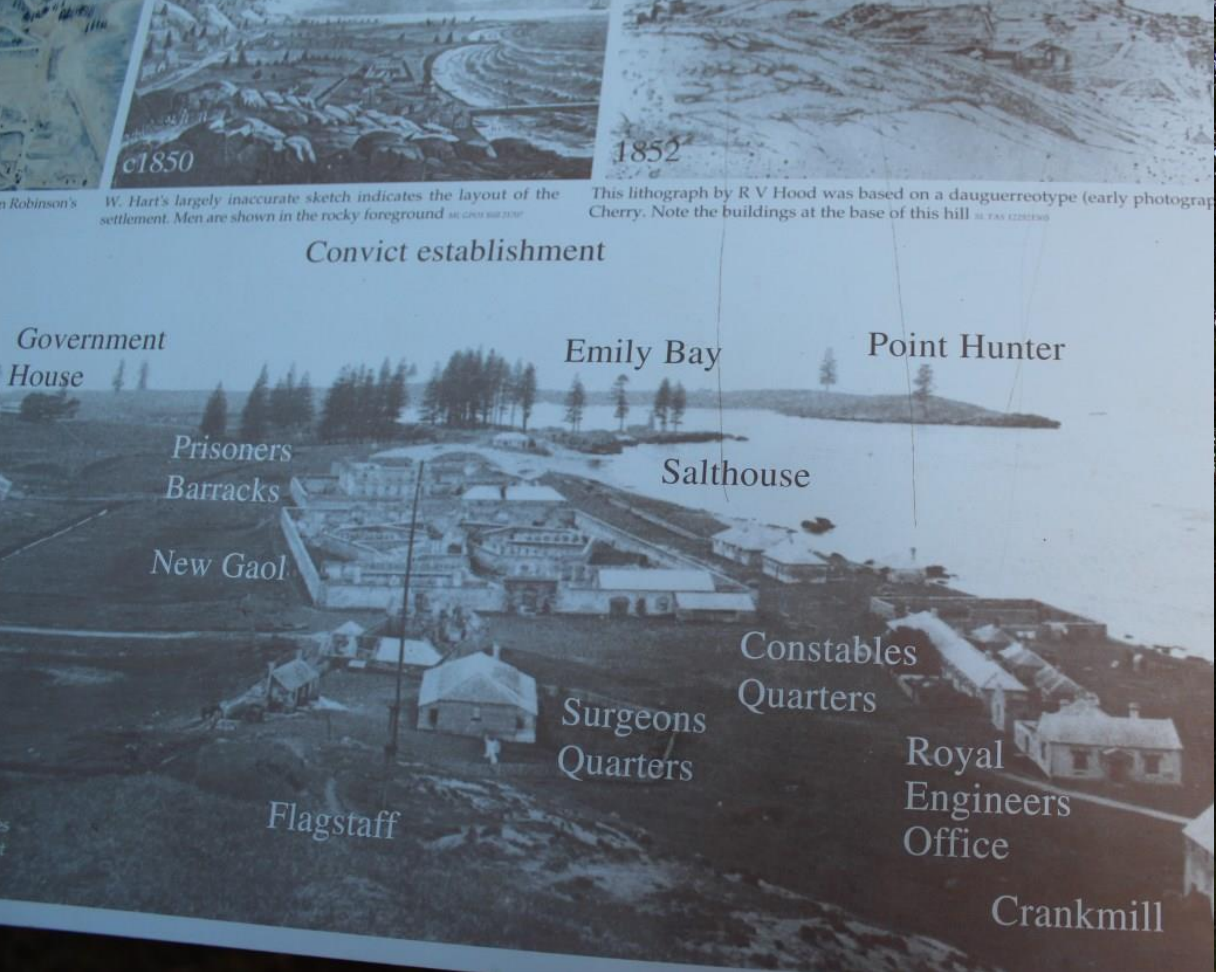
Circulation routes, roads and pathways



- LEGEND
- KAVHA World Heritage Site
 - Protection of Setting of the Place**
 - Areas to be protected from inappropriate activities
 - Area to be protected from visual intrusion
 - Source: Tropman LMCP Vol 1 1994 Figure 11
 - Historic Viewing locations & Visual relationships:**
 - ↔ Historically important visual links
 - Visual focuses
 - ↖ Historic viewing locations
 - ↔ Long / focal view
 - Source: Tropman LMCP Vol 1 1994 Figure 9



Views and visual relationships, overlaid on existing vegetation



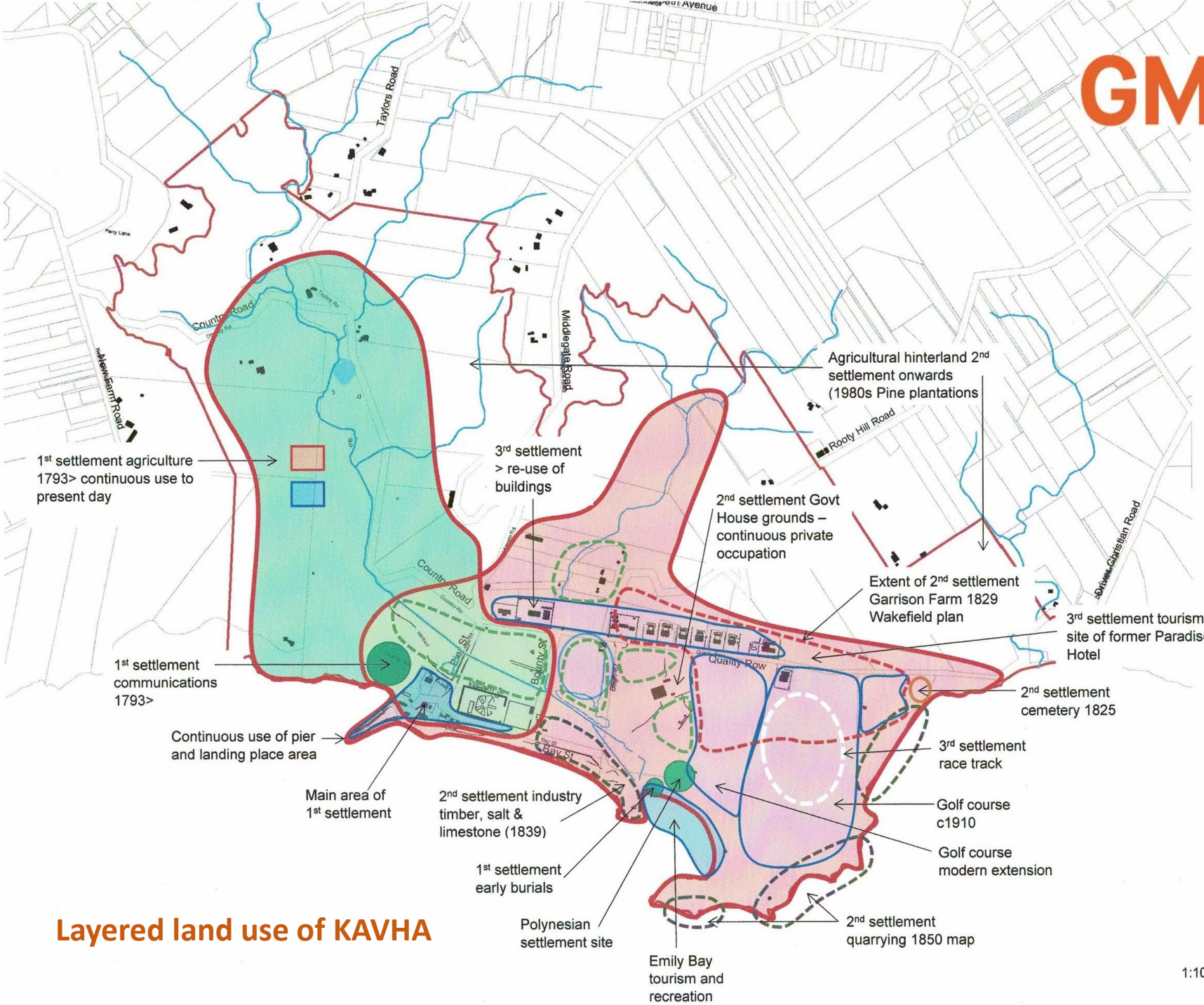
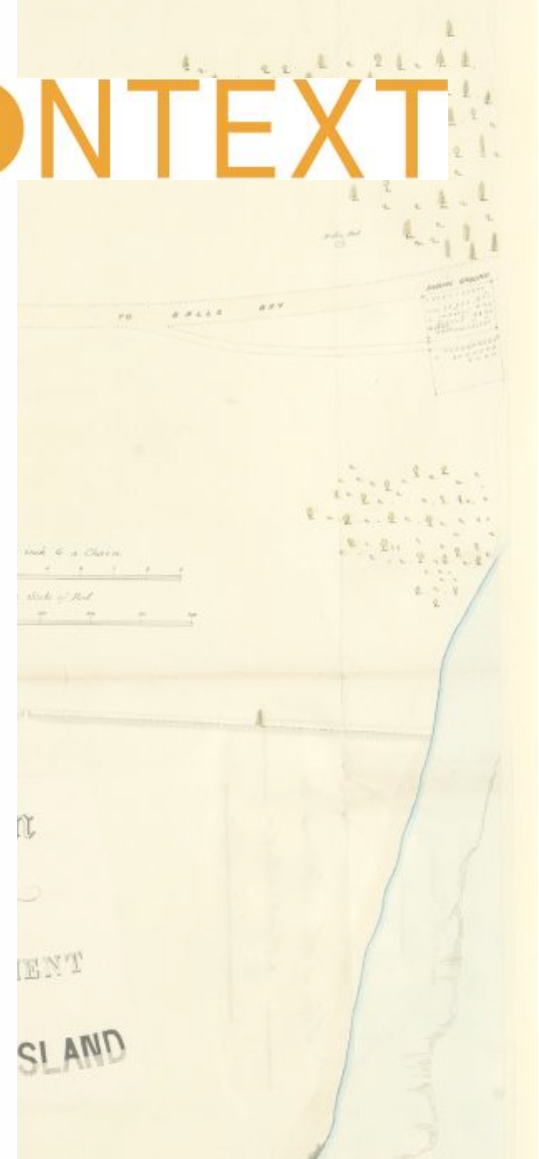
A Cultural Landscape Management Plan
Kingston + Arthur's Vale Historic Area, 2018

GMLCONTEXT



A Cultural Landscape Management Plan
Kingston + Arthur's Vale Historic Area, 2018

GMLCONTEXT



Layered land use of KAVHA

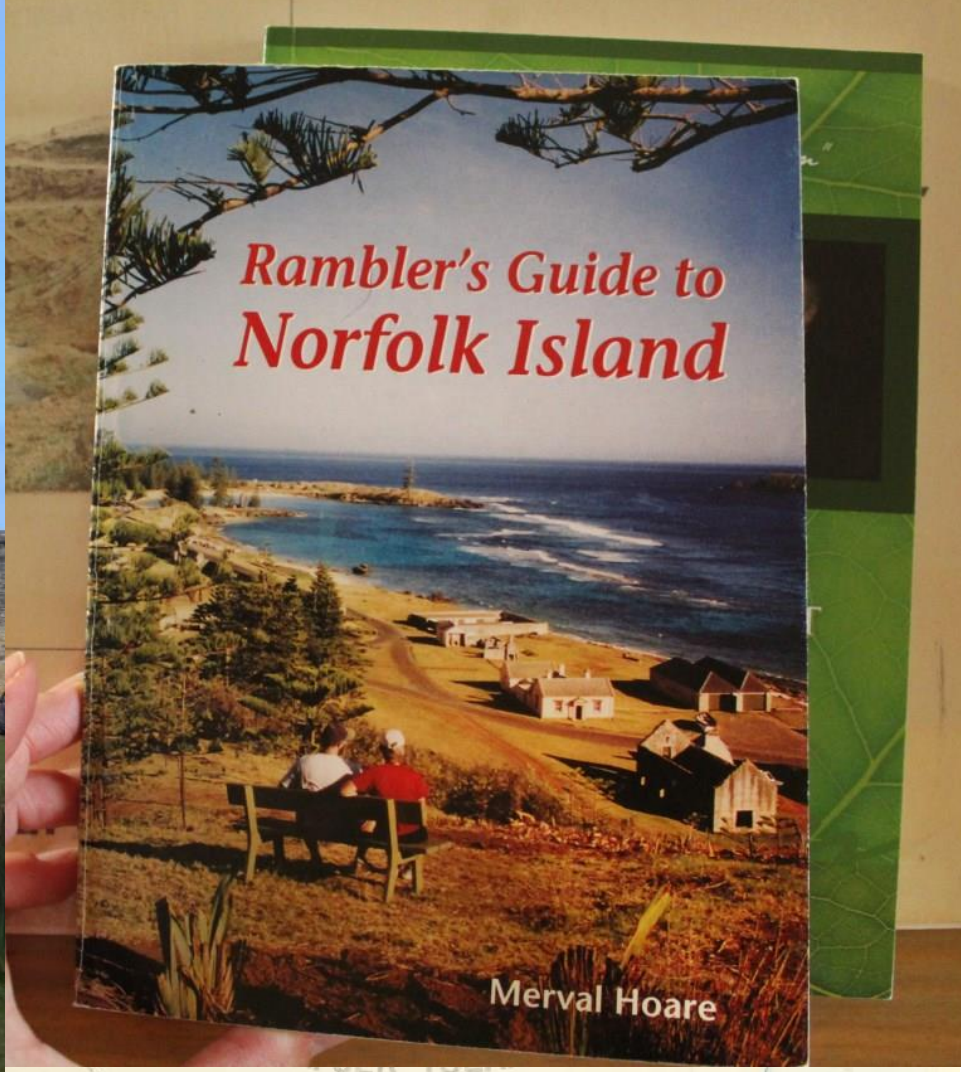


LEGEND

	KAVHA World Heritage Site		Revegetated area
CURRENT LAND USE			Revegetated dunal area
	Cattle Grazing/ passive recreational use (Public lands)		Stockpile of building materials (ruins) by KAVHA Works crew
	Agricultural/ grazing		Roads - bitumen
	House Gardens		Tracks - gravel
	Passive recreational use/ Historical ruins		Driveways - concrete
	Sportsfield & Golfcourse		Footpath
	Picnic / BBQ areas		Cattle grid
	Beach and Water Access		Fence
	Cemetery		Wall
	Private - no public access		Waterbody/Dam
	Wharf (Industry/recreational/Tourism)		Stream/creek line
			Drainage line
			Building (KAVHA)



Landscape analysis: current land use of KAVHA



A Cultural Landscape Management Plan
Kingston + Arthur's Vale Historic Area, 2018

GMLCONTEXT



A Cultural Landscape Management Plan
Kingston + Arthur's Vale Historic Area, 2018

GMLC  **ONTEXT**



A Cultural Landscape Management Plan
Kingston + Arthur's Vale Historic Area, 2018

GMLC●NTEXT



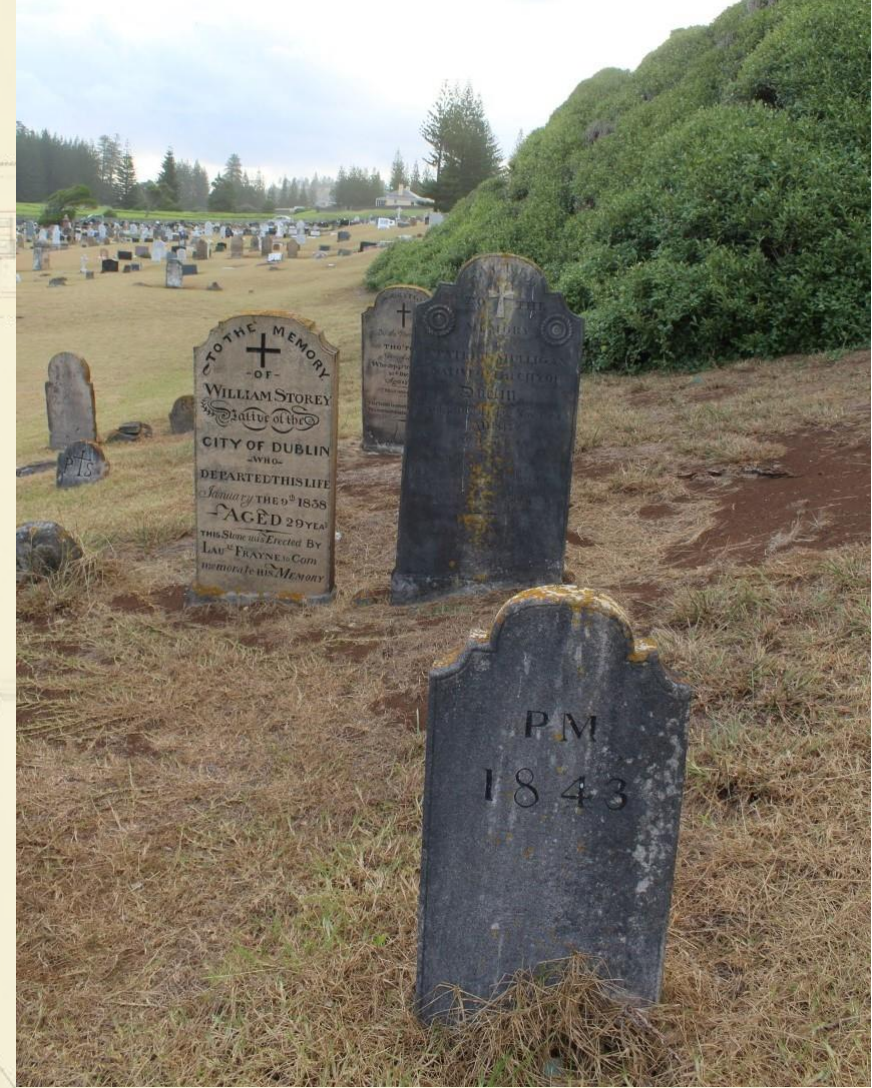
A Cultural Landscape Management Plan
Kingston + Arthur's Vale Historic Area, 2018

GMLC  **ONTEXT**



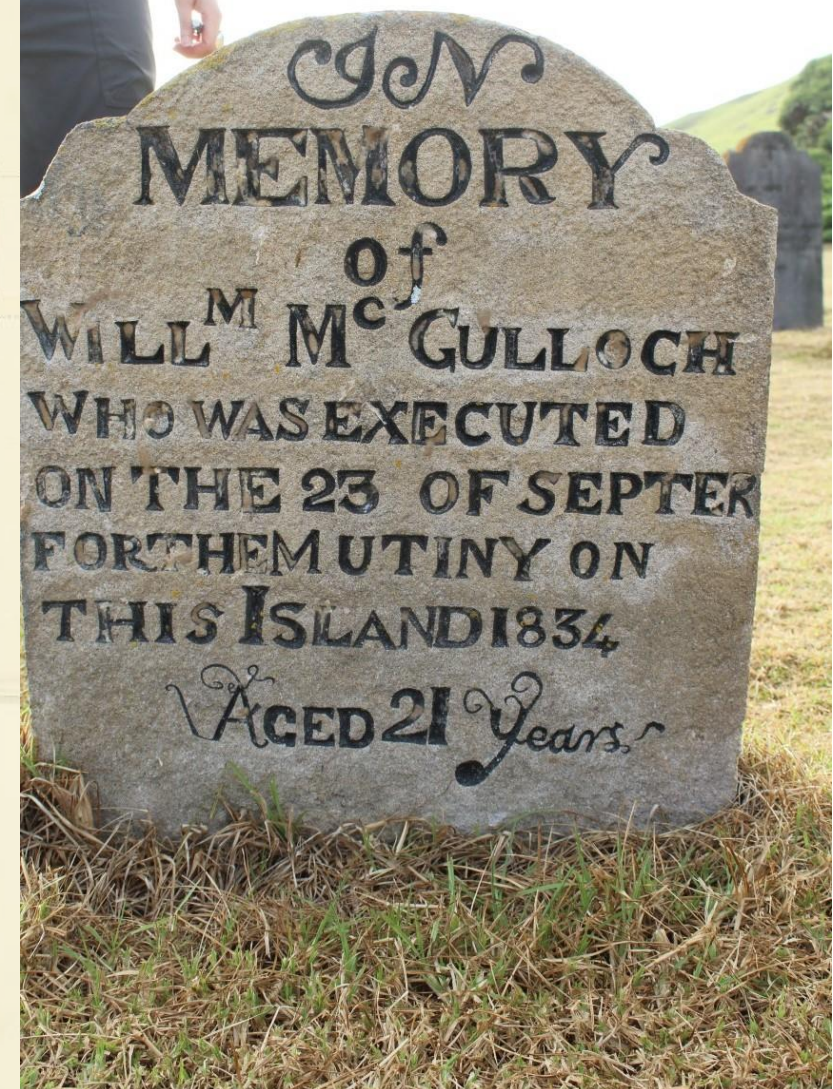
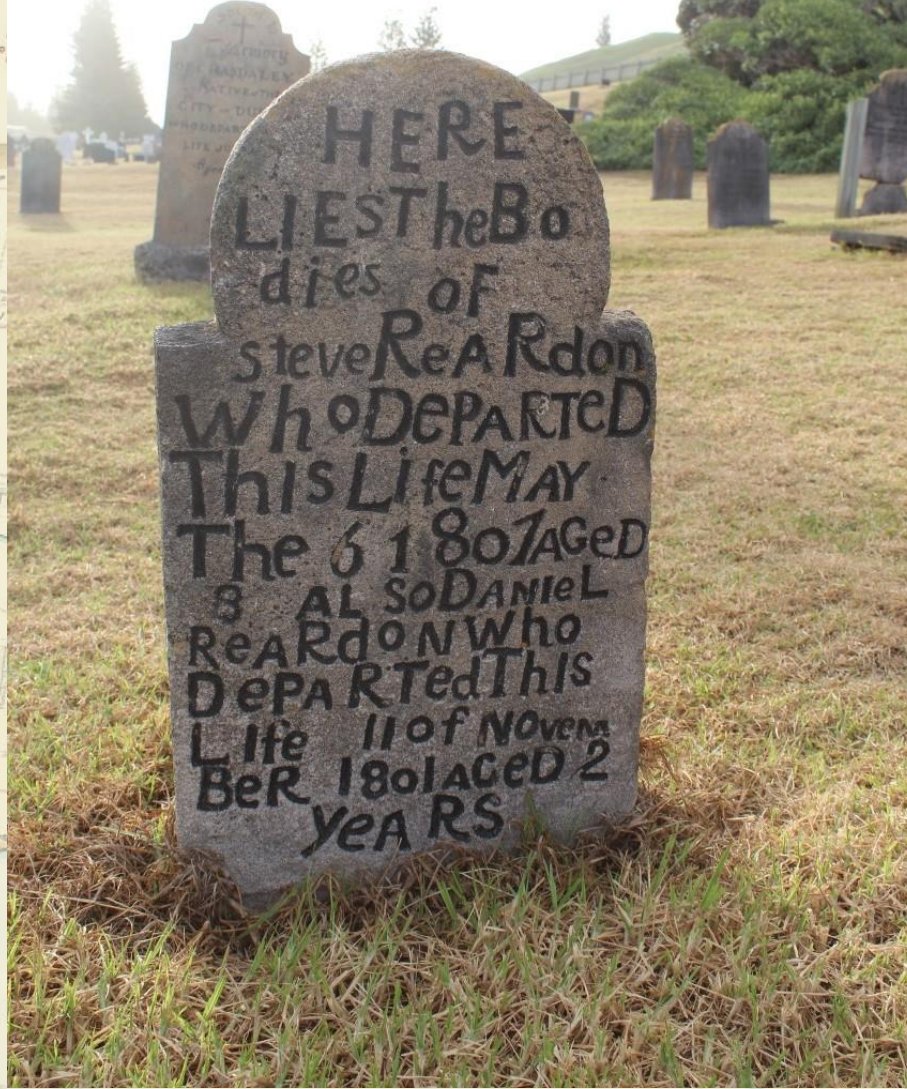
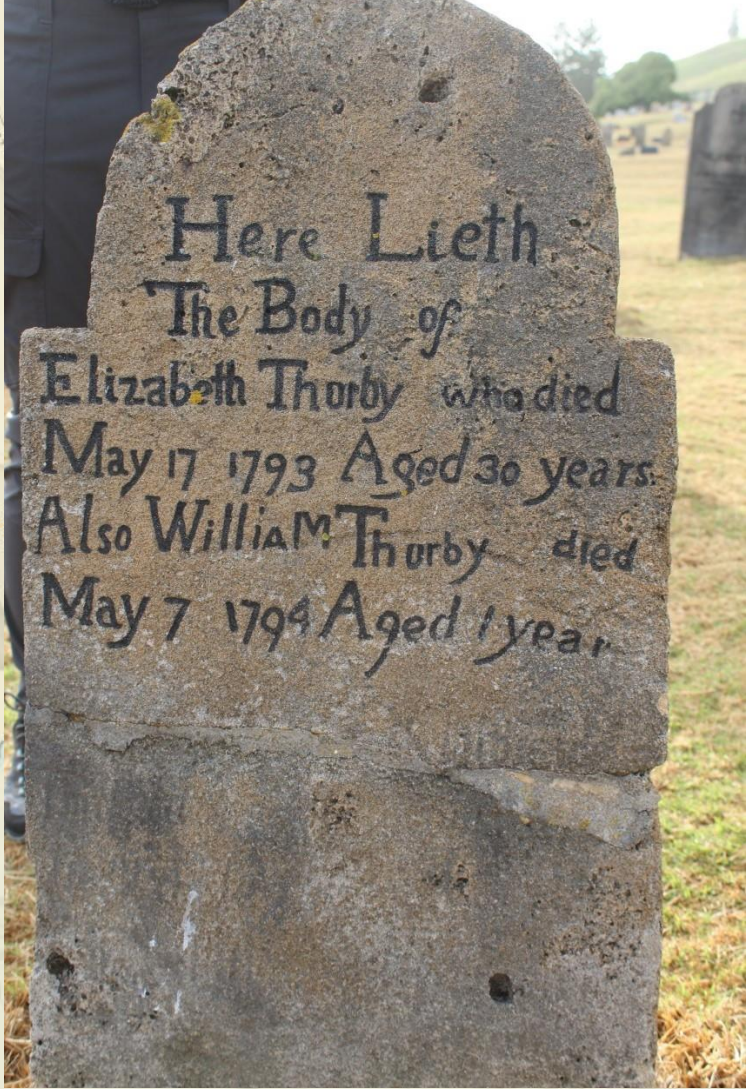
A Cultural Landscape Management Plan
Kingston + Arthur's Vale Historic Area, 2018

GMLC  **CONTEXT**



A Cultural Landscape Management Plan
Kingston + Arthur's Vale Historic Area, 2018

GMLCONTEXT





A Cultural Landscape Management Plan
Kingston + Arthur's Vale Historic Area, 2018

GMLCONTEXT



A Cultural Landscape Management Plan
Kingston + Arthur's Vale Historic Area, 2018

GMLCONTEXT



A Cultural Landscape Management Plan
Kingston + Arthur's Vale Historic Area, 2018

GMLCONTEXT



A Cultural Landscape Management Plan
Kingston + Arthur's Vale Historic Area, 2018

GMLCONTEXT

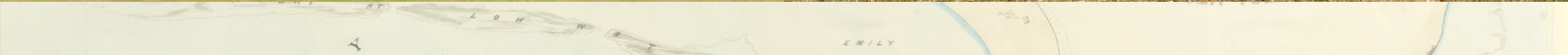


A Cultural Landscape Management Plan
Kingston + Arthur's Vale Historic Area, 2018

GMLC  **CONTEXT**



A Cultural Landscape Management Plan
Kingston + Arthur's Vale Historic Area, 2018



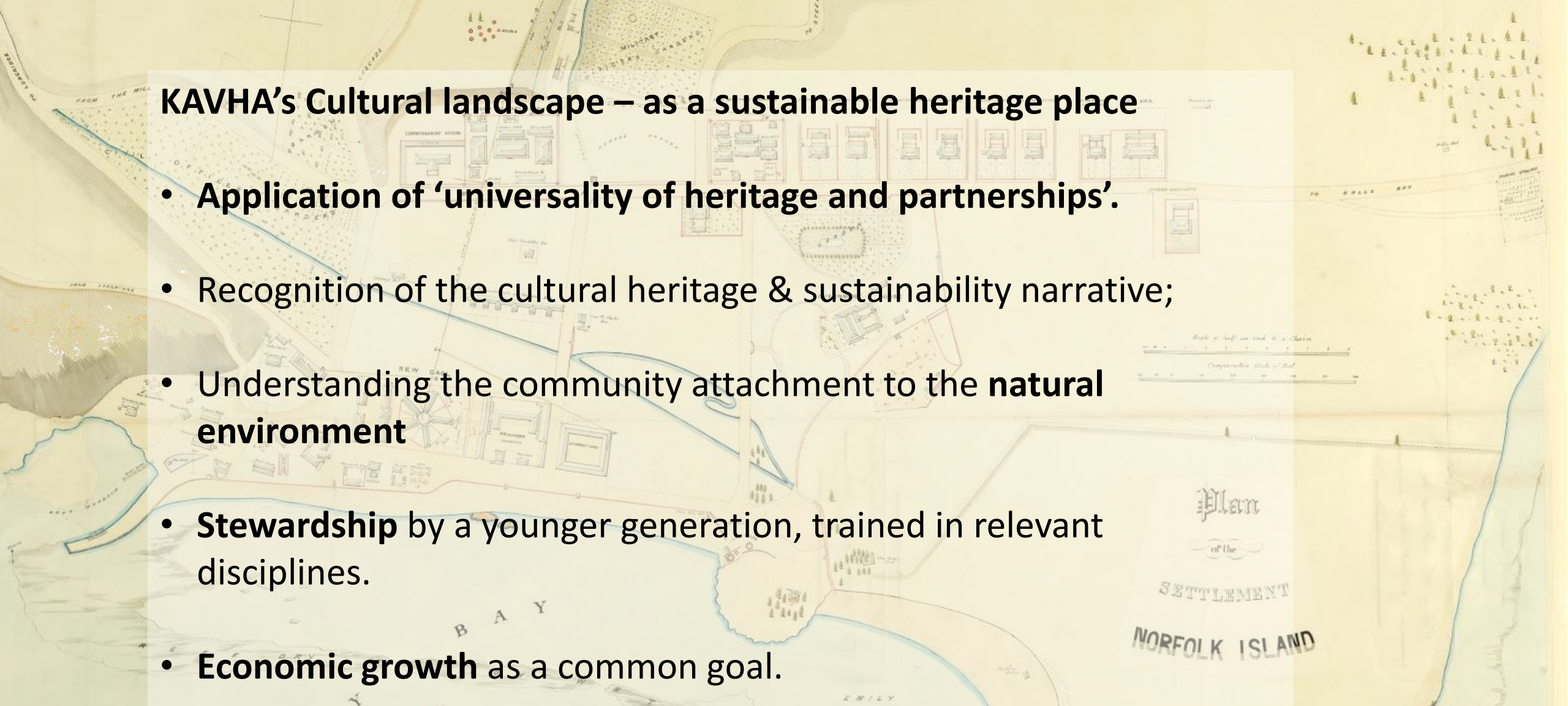
KAVHA's Cultural landscape – as a sustainable heritage place

- **Restoration of the discordant relationship** between the Commonwealth and local governments
- Maintenance of **strong and sustained support** from all levels of government, people who work at the site, landholders, the tourism industry and the Norfolk Island community
- **Environmental** education and awareness that revises **operational arrangements** based on a broader funding base
- **Better engagement** with community about their culture and its sustainability.



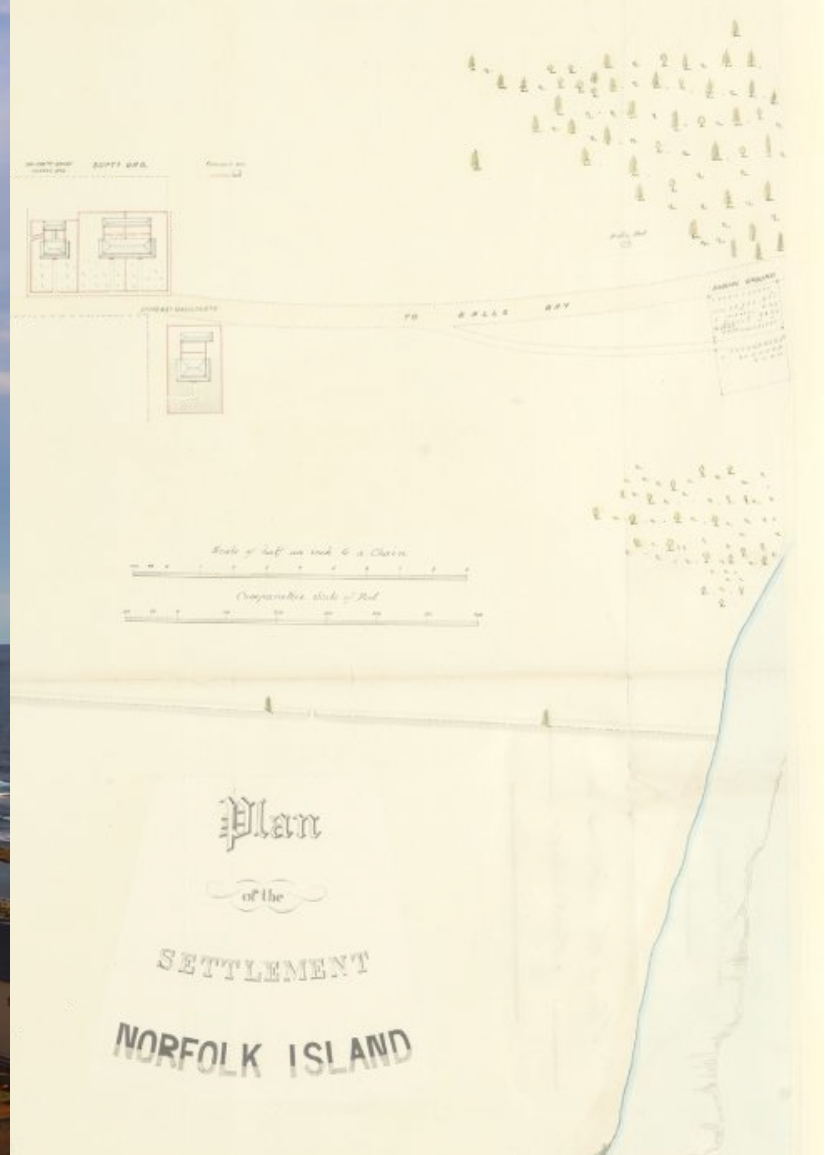
A Cultural Landscape Management Plan
Kingston + Arthur's Vale Historic Area, 2018

GMLCONTEXT

A historical map of Norfolk Island, showing a settlement layout with various buildings, streets, and a bay. The map is titled 'Plan of the SETTLEMENT NORFOLK ISLAND'. It includes labels for 'MILITARY', 'COMMISSARY STORES', 'REWARD STORES', 'BAY', and 'EMILY'. There are also scale bars and a north-south orientation.

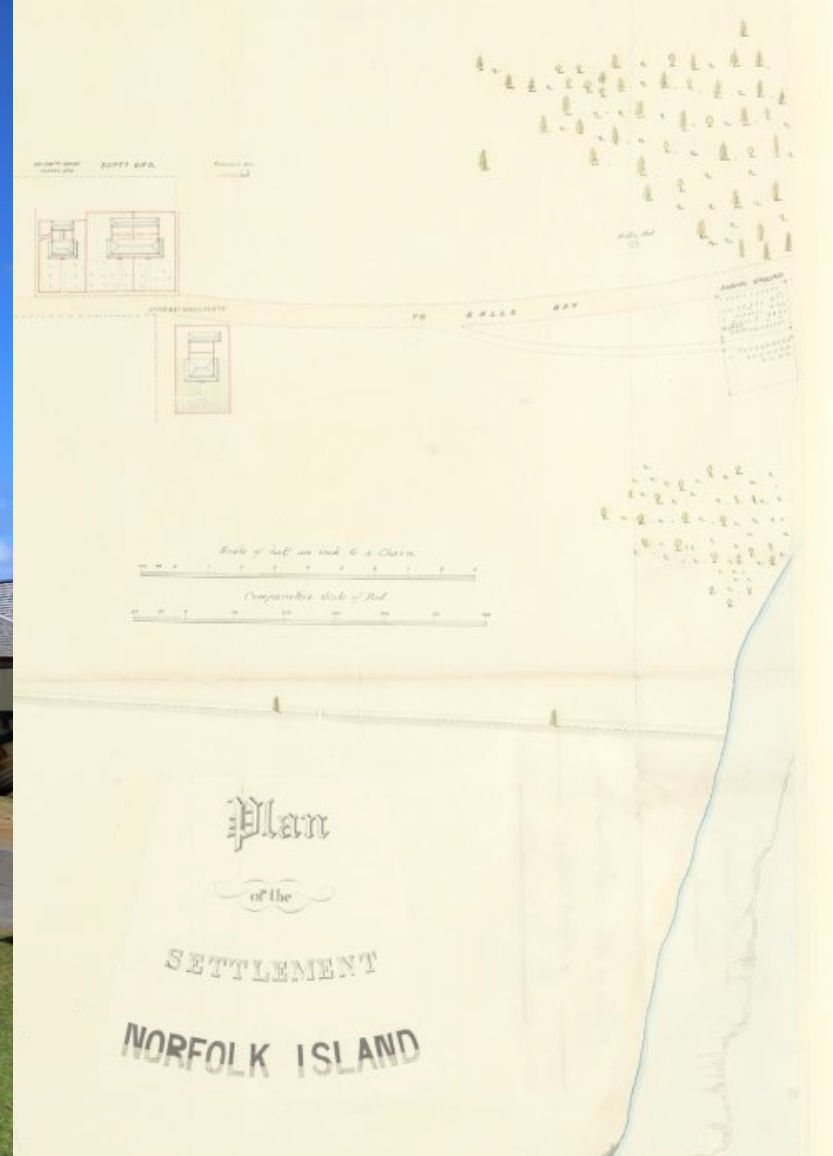
KAVHA's Cultural landscape – as a sustainable heritage place

- Application of 'universality of heritage and partnerships'.
- Recognition of the cultural heritage & sustainability narrative;
- Understanding the community attachment to the **natural environment**
- **Stewardship** by a younger generation, trained in relevant disciplines.
- **Economic growth** as a common goal.



A Cultural Landscape Management Plan
Kingston + Arthur's Vale Historic Area, 2018

GMLC  **CONTEXT**



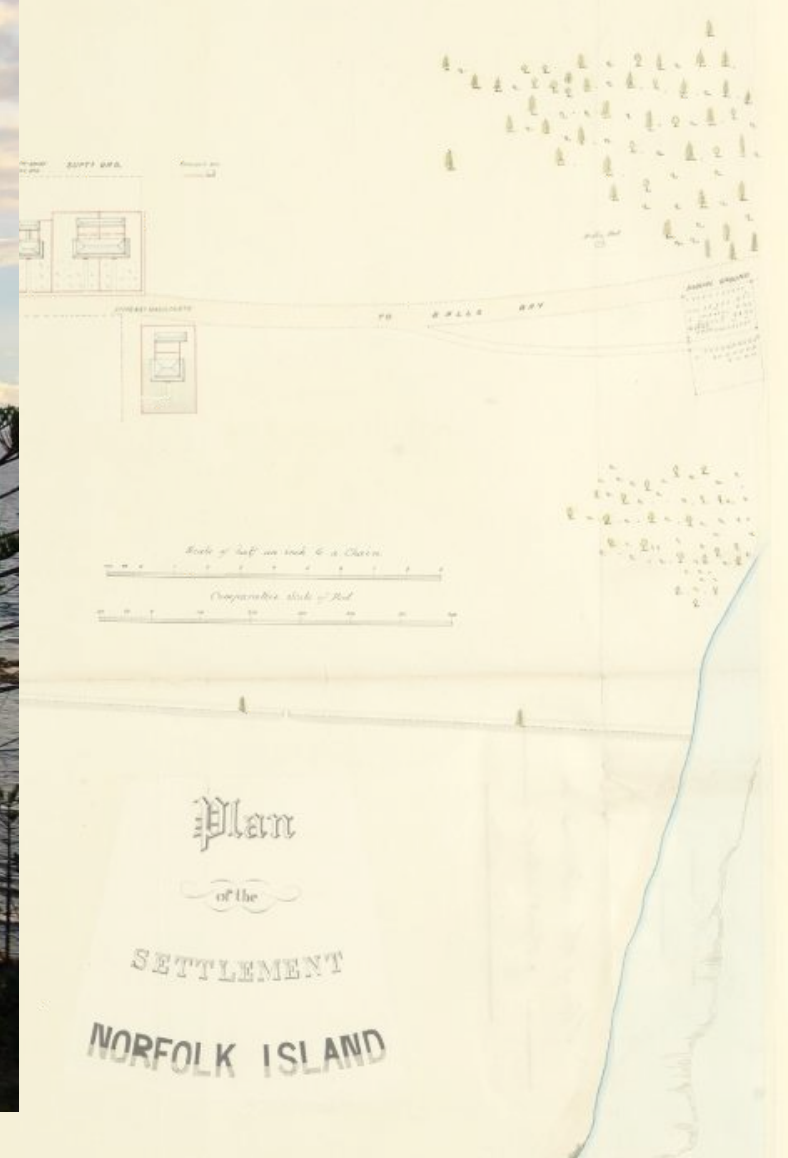
A Cultural Landscape Management Plan
Kingston + Arthur's Vale Historic Area, 2018

GMLCONTEXT



A Cultural Landscape Management Plan
Kingston + Arthur's Vale Historic Area, 2018

GMLC●NTEXT



A Cultural Landscape Management Plan
Kingston + Arthur's Vale Historic Area, 2018

GMLCONTEXT