

Prospects for World Heritage in the equatorial and south Pacific region

ICOMOS PASIFIKA
Levuka October 2018

Kevin L. Jones Archaeologist

ICOMOS New Zealand

kenx1000@gmail.com

SCOPE

- ▣ Incremental measures for World Heritage (WH) representation in the Pacific
- ▣ We need:
 - more tentative listings
 - to increase nominations and successful inscriptions
 - to widen the cultural scope of existing nominations and inscriptions
- ▣ Metropolitan authorities (France, USA, Aus.), Pacific Island countries (PICs) and ICOMOS can put them together

THEMATIC STUDIES

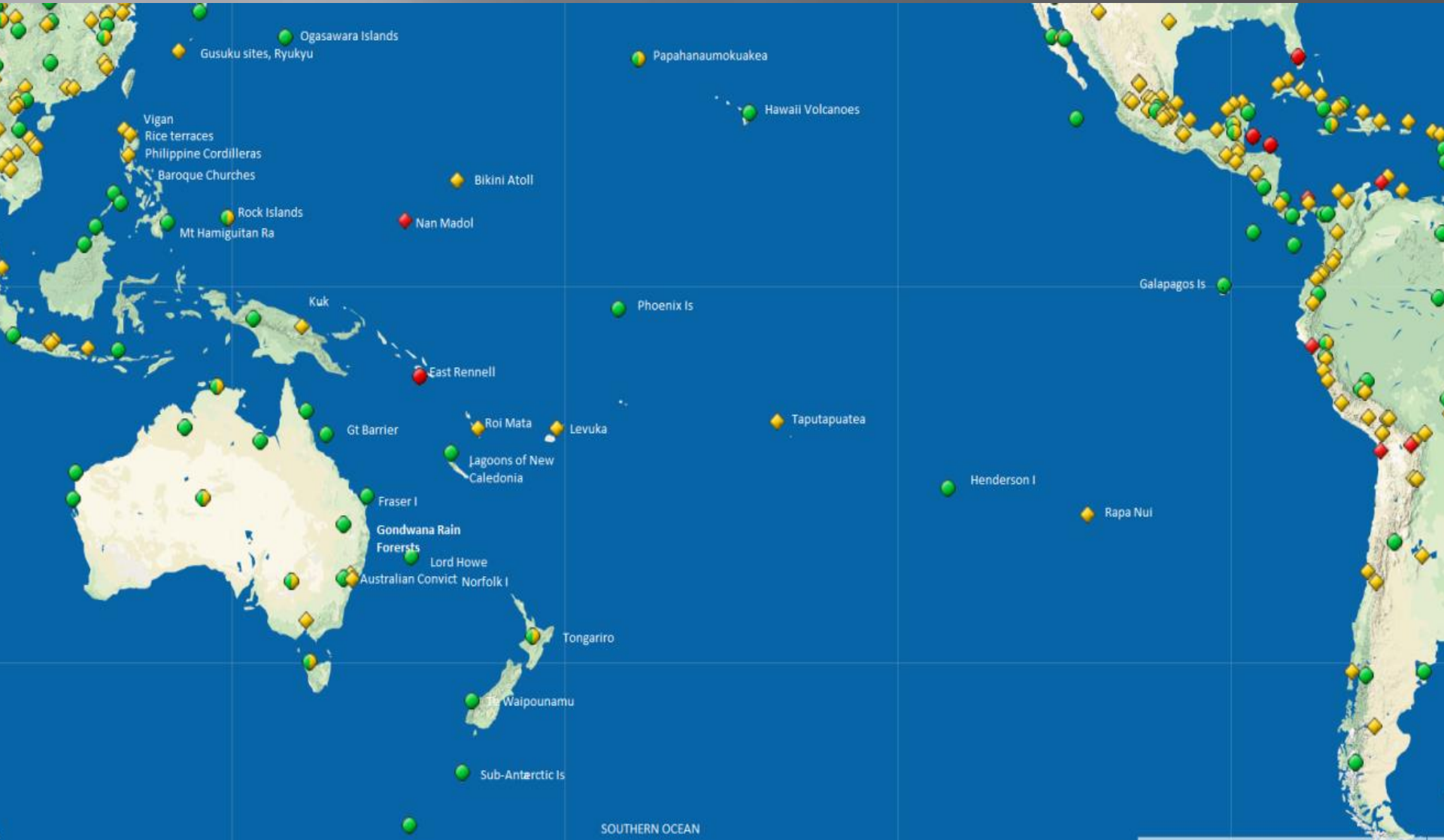
- ▣ Port Vila, Vanuatu, 2005, Pacific Island Country (PIC) representatives identified regional themes for the Pacific region
 - Associative cultural landscapes of stories that explain the origin and development of social structures in the Pacific
 - Cultural landscapes related to cultivation in the Pacific
 - Lapita expansion, i.e., earliest Austronesians

	Sub-themes	Site types	Specific sites
n he	<ul style="list-style-type: none"> • Early settlement of Near Oceania • Early Austronesian movement (Lapita, Western Micronesian expansion) • Settlement of the Eastern Pacific • Navigation and voyaging 	<ul style="list-style-type: none"> ▪ Lapita sites ▪ Archaeological sites ▪ Burial sites ▪ Anthropogenic landscapes ▪ Canoe landings 	<ul style="list-style-type: none"> ➤ Lapita sites in PNG, Vanuatu, Solomons, New Caledonia, Samoa, Tonga, Fiji, Wallis and Futuna ➤ Huon Peninsula –Pleistocene settlement ➤ Talasea obsidian quarries and trade ➤ <u>Kuk horticultural site (PNG)</u> ➤ Stone Money (FSM) ➤ Sigatoka Dunes (Fiji) ➤ <u>Te Po, Taputapuatea (French Polynesia)</u>
	<ul style="list-style-type: none"> • Origin stories • Warfare and peace-making • Traditional Settlements • Places that represent the origin and development of social structures • Nation building • Paths to and places of the afterlife • Trade and exchange • Stories associated with mythical or historic figures • Tapu/noa (tabu) • Landscape modification • Pacific cultivation • Fishing • Resource management 	<ul style="list-style-type: none"> • traditional buildings e.g. fale • Habitation sites • Mound sites Fortifications • Associative Cultural Landscapes • Places of the dead • Places of exchange • Meeting places • Religious places • Ceremonial places • Places of storage • Places of traditional sports • Cultural routes • Men’s Sites • Women’s Sites. • Fishing sites • Dry and wet horticultural landscapes 	<ul style="list-style-type: none"> ➤ Traditional long houses (PNG) ➤ <u>Star mounds (Samoa)</u> ➤ Pulemelei (Samoa). ➤ <u>Imeong landscape (Palau)</u> ➤ Manono . ➤ Burekalou. ➤ <u>Lapaha, Royal Tombs of Tonga</u> ➤ Ha’among a Maui (trilithon) (Tonga) ➤ <u>Nan Madol (FSM)</u> ➤ <u>Te Po, Taputapuatea (French Polynesia)</u> ➤ <u>East Rennell (Solomon Islands)</u> (cultural values) ➤ <u>Maungakiekie One Tree Hill (New Zealand)</u> ➤ <u>Kanak Landscapes (NC)</u> ➤ Volcanoes of Vanuatu. ➤ Stone Money (FSM). ➤ <u>Roi Mata cultural landscape (Vanuatu)</u> ➤ Hero’s marks (French Polynesia). ➤ Vanuatu rock art sites. ➤ <u>Kuk (PNG)</u> ➤ Maewo Taro irrigation (Vanuatu). ➤ Sigatoka Dunes (Fiji) ➤ Bwabwai
ost	<ul style="list-style-type: none"> • Movements of People • Labour Trade • WW I and II, Cold War • Missionary endeavour • Exploration of the Pacific • Indigenous responses • Colonisation • Commerce and trade 	<ul style="list-style-type: none"> ▪ Mission sites ▪ Colonial settlements ▪ Plantations, mines ▪ Convict sites ▪ Maritime Infrastructure ▪ Shipwrecks ▪ Archaeological sites 	<ul style="list-style-type: none"> ➤ <u>Levuka (Fiji)</u> ➤ <u>Banaba/Ocean Island (Kiribati)</u> ➤ <u>Bikini Atoll (RMI)</u> ➤ <i>President Coolidge Shipwreck (Vanuatu)</i>

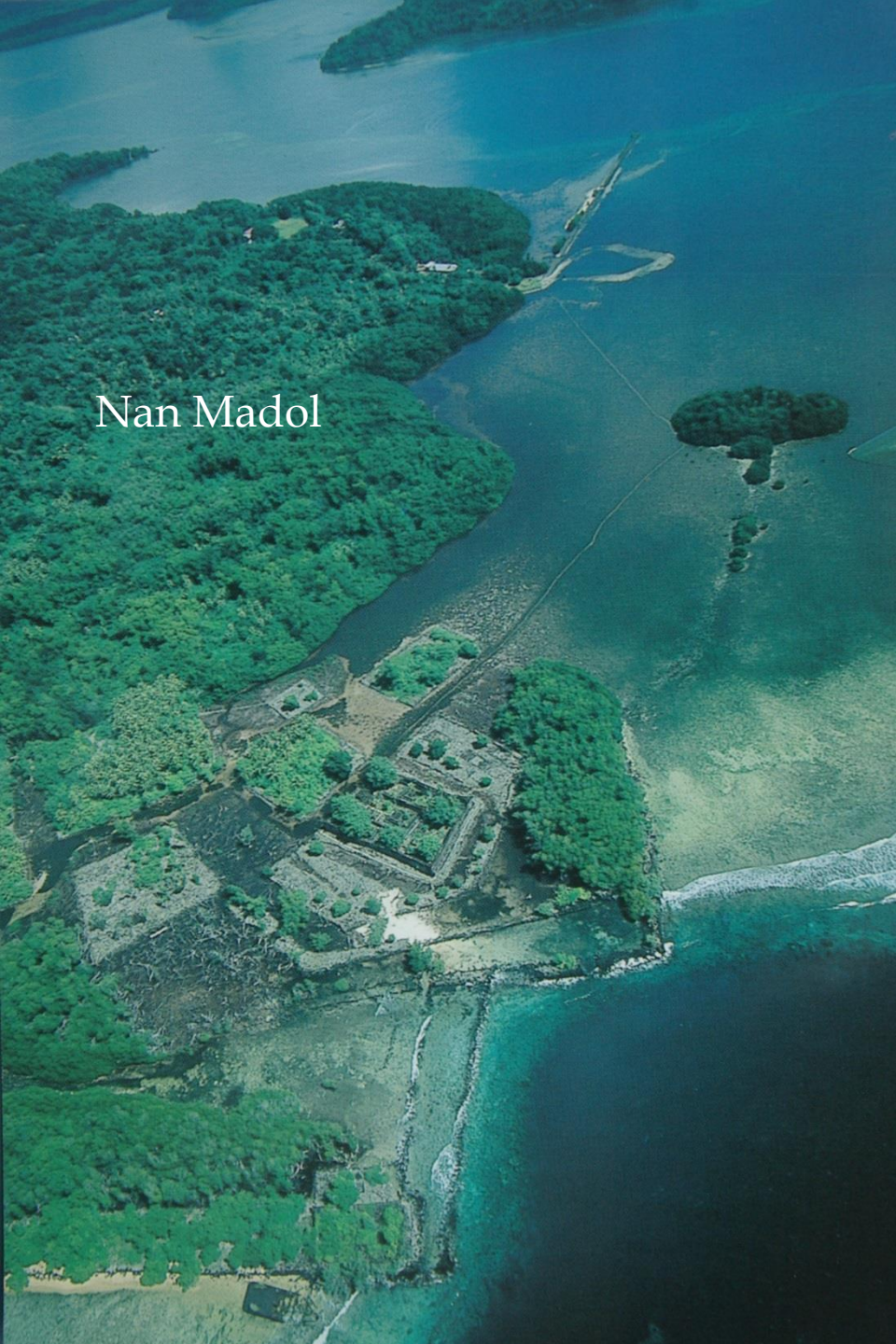
INSCRIPTIONS SINCE 2005 – a good achievement

- ▣ Kuk (PNG)
- ▣ Taputapuātea (Fr. Polynesia)
- ▣ Nan Madol (Pohnpei, FSM)
- ▣ Roi Mata Cultural Landscape (Vanuatu)
- ▣ Levuka (Fiji)
- ▣ Banaba/Ocean Island (Kiribati)
- ▣ Bikini Atoll (RMI)
- ▣ Phoenix Islands (Kiribati)
- ▣ Papahānaumokuākea (NW Hawaiian Is) (USA)
inscription
- ▣ Rock Islands (Palau)

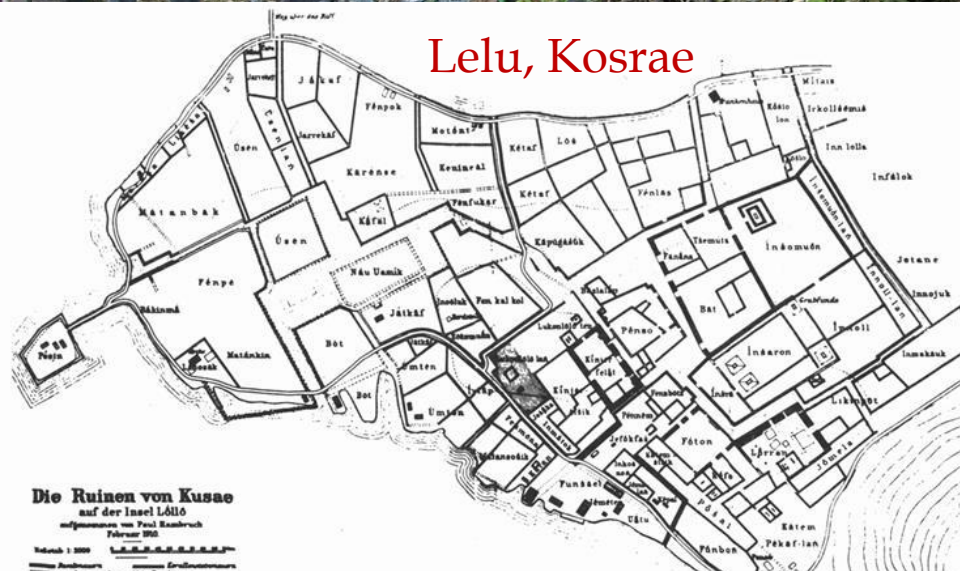
WH INSCRIPTIONS IN THE WIDER PACIFIC



Nan Madol



Lelu, Kosrae



Die Ruinen von Kusae auf der Insel Lölö

aufgenommen von Paul Hambruch
Februar 1906



Taputapuātea



Monkhouse, 1769

‘L’aboutissement d’un marathon de plus de vingt ans’



Rapa Nui

THEMATIC STUDIES

- ▣ Cultural landscapes (Smith, Jones and Denyer 2007)
- ▣ Early human expansion in the Pacific (Lilley, coordinator, 2010)
- ▣ Take up of results?

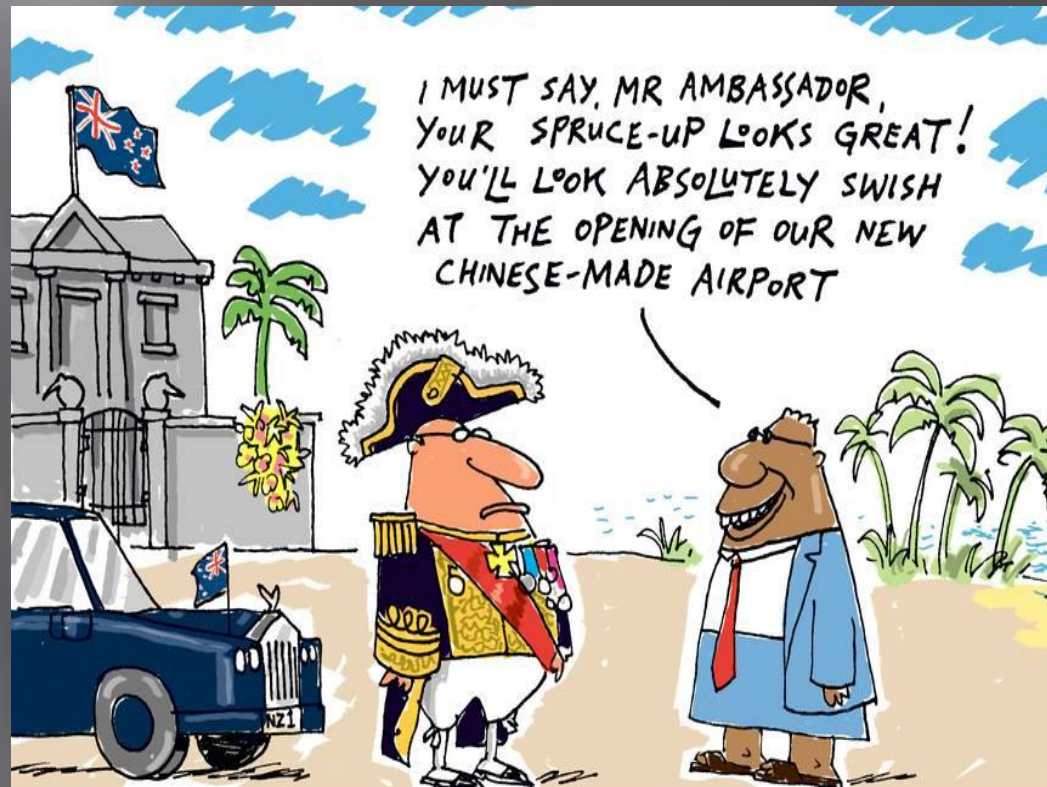
ANALYSIS

- ▣ Tonga, Samoa and Cook Islands no inscriptions but good prospects
- ▣ Very small PICs (populations less than 2,000) seem to have poor prospects
- ▣ But small PICs a strong role in oceanic inscriptions
- ▣ Monumental values still strong in successful inscriptions – needs to be continued or not?
- ▣ ‘Connecting practice’ – between cultural and natural – being emphasised by Paris (Leitão 2017)
- ▣ ‘Metropolitan’ countries still important players

FOREIGN AID

- World Heritage Fund may come to have a role in the Pacific
- We should be shaping applications so as to make use of it
- US, Australia, NZ are all upping aid in Pacific, in response to aid and loans from China

China's Pacific aid dominance overstated
Australian think-tank, the Lowy Institute, has crunched seven years of data covering 13,000 projects. The data shows Australia and New Zealand have pumped the vast majority of money into the region - totaling \$7.79 billion since 2011 - making up 55 percent of all aid to the Pacific.



CURRENT TENTATIVE LISTS

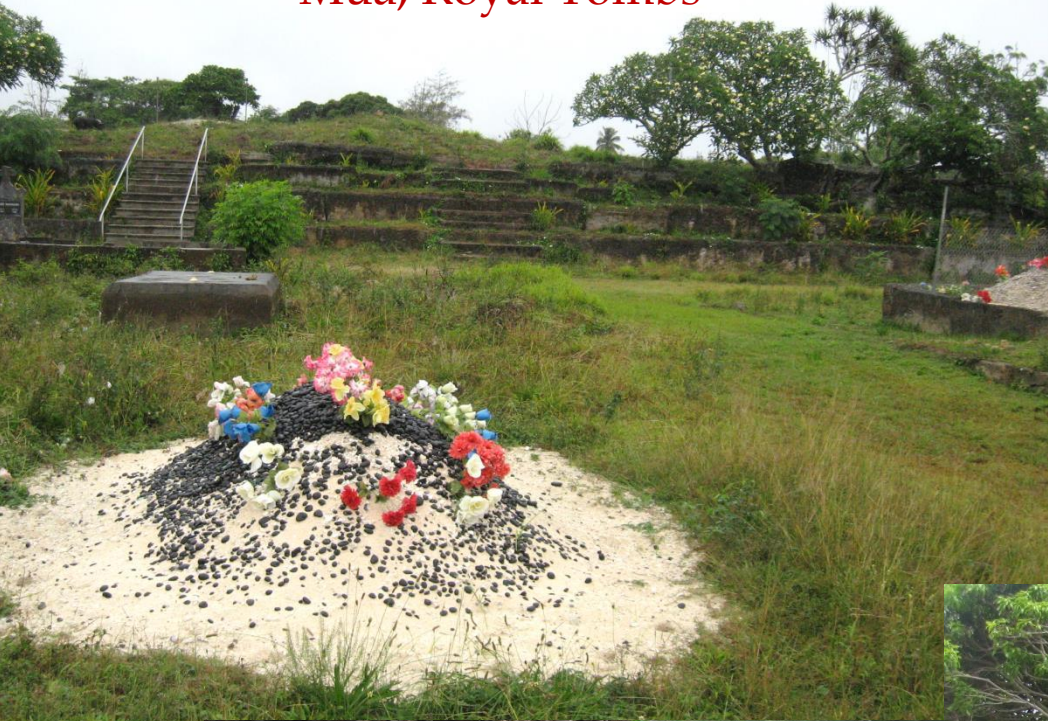
- ▣ Cook Islands – none as yet. Taputapuātea serial site?
- ▣ Fiji - Sigatoka Sand Dunes
- ▣ France – Les Iles Marqises
- ▣ Marshall Islands - Likiep Village, Mili Atoll, Northern Marshall Islands Atolls
- ▣ FSM – Yapese stone money, where is Lelu?
- ▣ NZ – Auckland volcanoes, Kerikeri, Napier Art Deco, Waitangi
- ▣ Palau – Imeong, Ngebedech terraces, Tet el Bad, Yapease stone-money quarry sites

- ▣ Papua New Guinea -Huon Terraces, Kokoda Track, Upper Sepik River Basin
- ▣ Samoa - Fagaloa Bay - Uafato Tiavea; Manono, Apolima and Nuulopa
- ▣ Solomon Islands - Marovo - Tetepare Complex, Tropical Rainforest Heritage
- ▣ Timor-Leste - Newly subscribed (2017) to the World Heritage Convention
- ▣ Tonga - Lapita Pottery Archaeological Sites, Ancient Capitals of the Kingdom of Tonga
- ▣ United Kingdom - No tentative listings
- ▣ USA - Pacific Remote Islands
- ▣ Vanuatu - Nowon and Votwos of Ureparapara; The President Coolidge; Yalo, Apialo and the sacred geography of Northwest Malakula



Vicinity,
Nabudrau
village, Rewa
delta, Fiji

Mua, Royal Tombs



TONGA

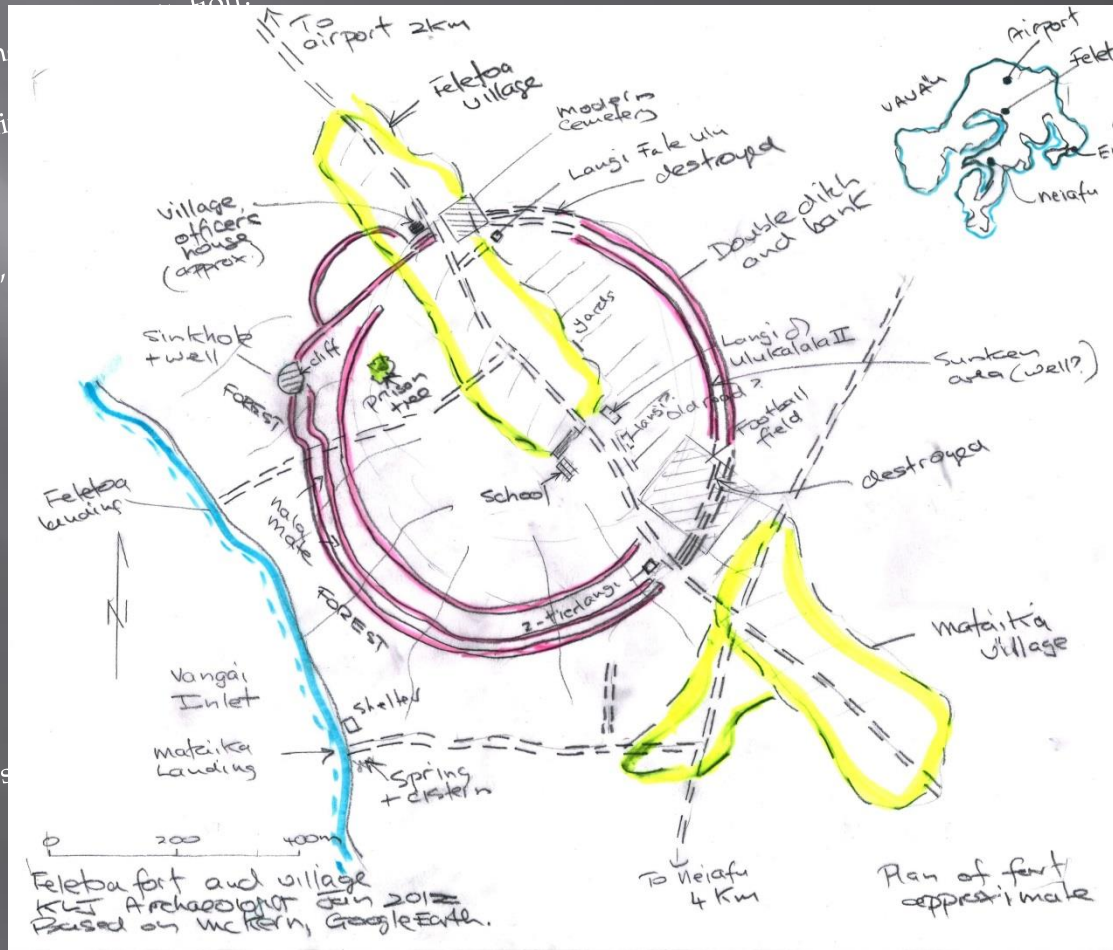
The Ancient Capitals of the Kingdom of Tonga

Ha'amonga a Maui



TONGA CHECKLIST

Feletoa - Ha'apai



- Management issues
- Community aspirations?
- Is area of site fully protected and surveyed?
- Is site fully within the reserve area
- What is tenure, reserve classification
- Does tenure suit protection and
- Other uses e.g. graves, fruit gathering, grazing
- Uses conflicting with tourism?
- Restrictions on use (when, how, by whom?)
- Ownership structure
- Owners live locally? Overseas?
- Fencing installed, if needed? (Describe)
- Hazards
- Physical risks
- Climate / climate change risks
- Habitation risks (farm stock, invasive species)
- How reduced or mitigated?
- Ecological setting
- Causing damage to site
- Impedes access
- of site

Auckland volcanic cones, NZ tentative list

Maungakiekie, One Tree Hill

Commuters into the city ... can see Rangitoto, Mt Eden and Mt Albert slowly unfold before their eyes. But for how much longer? That's the crunch question ... Councillors have to decide whether to leave well alone, or risk having to genuflect to the planners' new god, intensification.



CURRENT TENTATIVE LISTS

- ▣ Only New Zealand, Samoa, PNG and Vanuatu have adequate tentative lists (in Pacific perspective)
- ▣ These countries need to act on their lists
- ▣ More needs to be done to expand the lists in other PICs
- ▣ More thought needed on how to define sites of early settlement, e.g. Lapita

Organising to nominate

- ▣ One person charged with each of the following:
 - Thinking about the Op Guidelines criteria 1 – 6 and the property type and how they may apply to the property
 - Compiling the basic cultural history and oral history of the property
 - Thinking about and surveying the authenticity and integrity issues, with an eye on the criteria
 - Surveying comparative properties, within country and within Asia-Pacific
 - Monitoring and communicating with local interests and communities

Organising

- Documentation on legal protection and a record of customary management
- In due course someone responsible for compiling and writing the listing and the nomination
- ▣ Someone senior with a good understanding of the various interests at work
 - accountable for these activities and communicating upwards to the national authorities, assisting political advocates
 - ensuring that supporters at national level have the information that they need
 - responsible for overall process, resourcing, keeping to timetable