



CULTURE: Conserving it Together
Suva, Fiji, 1-5 October 2018
An ICOMOS conference on heritage conservation across the Pacific



The Kainake Project

INTERNATIONAL COUNCIL ON MONUMENTS AND SITES
CONFERENCE

Cultural Landscape Practices and Management

The Kainake Project as a case study

Jeffrey Noro

Founder and Executive Director

THE KAINAKE PROJECT

Presentation Outline

- Papua New Guinea
- Bougainville – the lessons to be learnt
- The Kainake Project
- Strategy
- Success stories

Papua New Guinea



Picture above: Map of Papua New Guinea in relation to the region
Picture right: Kuk plantation where there is archeological evidenes of agriculture dating back about 10,000 years



Bougainville: Lessons to be learnt



Bougainville copper mine pit. A whole mountain was removed in order to access the copper ore body



Copper sulfate leaching from stock pile into the river system more than 20 years after closure of mine.

The Kainake Project: our philosophy

- Organization was formed in August, 2013
- Main purpose was to **translate** government **policies** into implementable **community actions** that are **relevant**
- Promoting self reliance in the community
- Community problems require community solutions
- For three years, the community self funded its projects through donations and fundraisings bring to the community a real sense of purpose and collective effort.



Picture top right: *Community meeting in 2013 to establish organisation*

Picture bottom right: *Community builds school in 2014*



Our Strategy (2017-2027)

CRITICAL ECOSYSTEM
PARTNERSHIP FUND



Governance



Partnerships



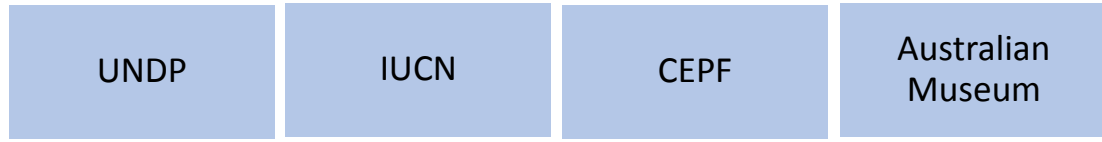
Community Impact

Build Kainake Project's Institutional Capacity
Recognize and strengthen cultural institutions
Develop a people centered approach

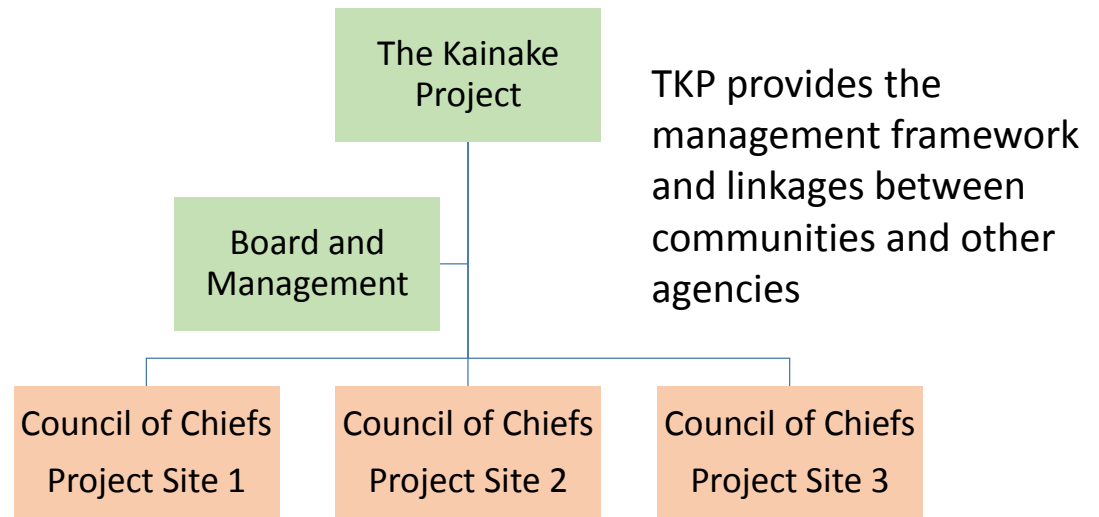
Governance



Strengthening traditional governance is important for sustainability and local ownership of projects.



Funding agencies provide Small Grants TKP. Management of funding is guided by Memorandum of Agreements



TKP provides the management framework and linkages between communities and other agencies

The Council of Chiefs from each community operates independently and subsequently report to the Kainake Project

Partnerships



BUILDING HORIZONTAL RELATIONS

Building and maintaining relationships between cultural communities and people is key to collective growth and learnings. A chief from Wisai presents a spear to Jeffrey Noro as a sign welcoming The Kainake Project and the Australian Museum to conduct research and conservation.



BUILDING VERTICAL RELATIONS

Building relationships with the private sector, government and political leaders is essential. Pictured here are 2 National MPs and a UNDP Rep at the opening of our resource centre.

Community Impact



Examples of Outcomes – UNDP Small Grants (2017)



ESTABLISHMENT OF COMMUNITY CONSERVATION and RESEARCH AREA

- 65 hectares of community conservation
- Management using community rules
- Council of Chiefs oversee the wellbeing of conservation area
- Community resource center established
- 7 training programs to be conducted
- Vanilla farming
- Women's tailoring project



Recordings of Medicinal Plants from Siwai



PRESERVATION OF KNOWLEDGE AND LANGUAGE AS ECOSYSTEM MANAGEMENT TOOLS

- In the local Motuna language, a traditional name of a plant describes the functionality of the plant
- Therefore when we lose traditional language, we lose the whole body of knowledge
- A photo was published to record plants in both traditional language and English
- Book was launched on the 19th of September 2018
- Book to be distributed to schools in Bougainville

European Month of Photography



Above picture: Bougainville leader and clan chief Alex Dawia talking to audience on the importance of traditional knowledge and language. Medicinal plants captured using lumen prints has been the focus of ongoing exchange between communities.



Above picture: Australian Embassy in Berlin, marketing the community art work during EMOP

Australian Museum Partnership (2016 – 2018)



RESEARCH AND CONSERVATION OF ENDANGERED MAMMALS

- The project is conducting research and conservation of endangered mammals species that are endemic to the Solomon Island archipelago ecoregion.
- Cultural exchanges between Bougainville, West Sepik Province in PNG and Malaita in Solomon Islands is ongoing.
- Current conservation flagship species are;
 - *Pterolopex flanneryi* – Monkey faced bat
 - *Solomys ponceleti* – Giant tree rat
 - *Solomys salebrosus* - Giant tree rat

Wisai Conservation Project



The Kainake Project is now partnering with the Wisai Conservation Project to preserve 50,000 hectares of rainforest for conservation. This area is one of Key Biodiversity Areas identified by the Critical Ecosystem Partnership Fund as a critically endangered ecosystem. Research and conservation work starts in January 2019 in partnership with the Australian Museum and Kansas University.

Summary

- Strengthening cultural structures and leadership will ensure sustainability
- Any interventions to preserve cultural heritage sites and biodiversity must be centered on people
- Build new business models that position conservation as essential to gains in ecosystem services and economic sustainability
- Innovation and creative thinking needs to be built into heritage and biodiversity conservation efforts
- Domestic and international partnerships are crucial
- Build this experiences into the national development policy and framework



Picture above: Published book that promotes preservation of traditional knowledge and language as ecosystem management tools

More information

- Website: www.kainakeproject.org
- Email: info@kainakeproject.org

MIRAHU MANNI

(Means “Thank you” in the Motuna Language)